

PHOTOMETRIC SITE PLANS
1" = 20'-0"

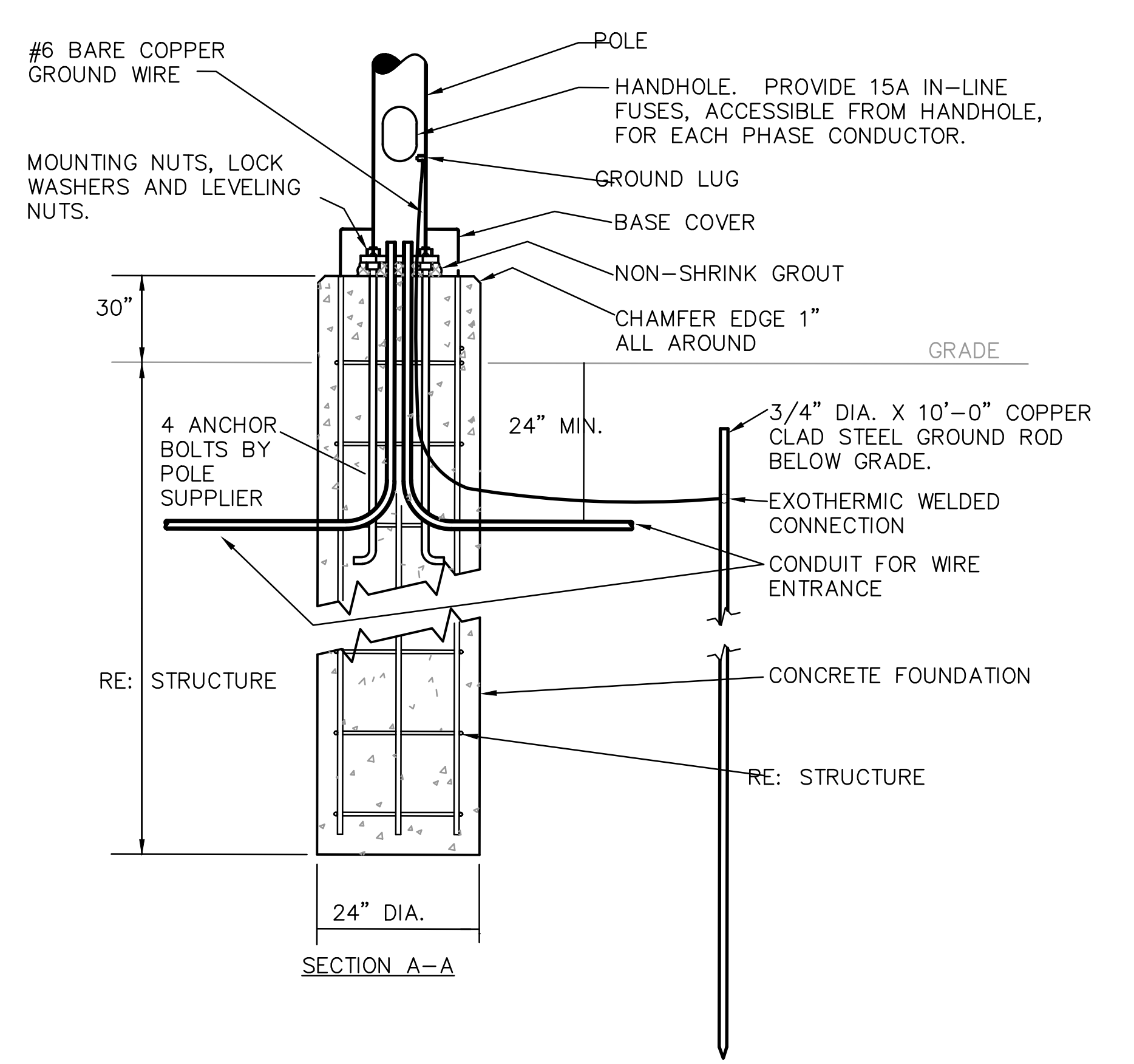
2 SITE LIGHTING PHOTOMETRIC DATA

ALL PHOTOMETRIC DATA IS TAKEN SHOWING HORIZONTAL FOOT CANDLES AT 3FT.

- MAX POLE HEIGHT FOR SITE: 17.5 FT
- AVERAGE FOOT CANDLES FOR SITE: 4.25 FC
- MAXIMUM FOOT CANDLES FOR SITE: 45.5 FC
- MAXIMUM FOOT CANDLES AT PERIMETER: 1.0 FC

3 LIGHTING FIXTURE SCHEDULE (EXTERIOR)

Q	MANUF#NUMBER: LITHONIA DMW2 L24-3000LM ACL-MVOLT-G21-3SK-80 VOLTAGE: 120 FINISH: WHITE LAMP: QUANTITY - 18 WATTS - 18 TYPE - LED REMARKS: GASKETED LED STRIP FIXTURE WITH REINFORCED FIBERGLASS HOUSING. FIXTURE SHALL BE LISTED FOR WET LOCATIONS.	CC	MANUF#NUMBER: TIVOLLSL6-16-30-CL5-CABLE-110LS-LOCK-4/7-60-1-5-12-D VOLTAGE: 120 FINISH: BLACK LAMP: QUANTITY - 1 WATTS - 30 TYPE - LED REMARKS: STRING LED LIGHT FIXTURE. PROVIDE WITH ALL MOUNTING HARDWARE AND DRIVERS. COORDINATE SUCH THAT THE LIGHTING HAS ALL PERIPHERALS TO BE A COMPLETE WORKING SYSTEM.
QE	MANUF#NUMBER: LITHONIA DMW2 L24-3000LM ACL-MVOLT-G21-3SK-80 VOLTAGE: 120 FINISH: WHITE LAMP: QUANTITY - 1 WATTS - 18 TYPE - LED REMARKS: GASKETED LED STRIP FIXTURE WITH REINFORCED FIBERGLASS HOUSING. PROVIDE BATTERY POWER BACKUP TO ACTIVATE IN THE EVENT OF A POWER OUTAGE. FIXTURE SHALL BE LISTED FOR WET LOCATIONS.	DD	REMARKS: LED STRING LIGHTS FOR INSTALLATION AFTER LANDSCAPING HAS GROWN. DO NOT PROVIDE. THEY WILL BE PROVIDED AT A LATER DATE BY LANDSCAPING TO BE PLACED IN THE PLANTERS AND TREES AROUND THE PREMISES. POWER VIA EXTERIOR RECEPTACLE CALLED OUT ON E2.
R	MANUF#NUMBER: ATLAS WLM CALED VOLTAGE: 120 FINISH: BLACK LAMP: QUANTITY - 1 WATTS - 34 TYPE - LED REMARKS: LED WALL PACK WITH DIE CAST ALUMINUM HOUSING, SPECULAR REFLECTOR AND BOROSILICATE GLASS REFRACTOR. FIXTURE SHALL BE LISTED FOR WET LOCATIONS.	GG	MANUF#NUMBER: BUCKWYHS-0041-G55VX21-19W-30K-120 VOLTAGE: 120 FINISH: BLACK LAMP: QUANTITY - 1 WATTS - 8 TYPE - LED REMARKS: LED JELLY JAR LIGHTING FIXTURE. COORDINATE ELEVATION AND LOCATION WITH ARCHITECTURAL ELEVATIONS.
S1	MANUF#NUMBER: ACUTY BRANDS LMS2271MM-OLTEZHSJ REMARKS: SUPPLIED WITH WIRING. CONTRACTOR SHALL CONNECT TO CIRCUIT INDICATED ON PLAN.	HH	MANUF#NUMBER: 120 VOLTAGE: 120 FINISH: BLACK LAMP: QUANTITY - 1 WATTS - 8 TYPE - LED REMARKS: CUSTOM LED COVE LIGHTING PROVIDED BY AGI AND INSTALLED BY CONTRACTOR.
S1E	MANUF#NUMBER: ACUTY BRANDS LMS2271MM-OLTEZHSJ REMARKS: SUPPLIED WITH WIRING. CONTRACTOR SHALL CONNECT TO CIRCUIT INDICATED ON PLAN AND PROVIDE A BATTERY BACKUP MOUNTED ABOVE THE TRUSSES ON THE INTERIOR TO POWER THE LIGHT IN THE CASE OF A POWER OUTAGE.	II (BLUE DOG)	MANUF#NUMBER: SFLIGHTINGSEW-12146-3FT-L43W-AN08-120-277V-30K-3FT-RUN-OAP-14-DF-MCS VOLTAGE: 120 FINISH: BLACK LAMP: QUANTITY - 1 WATTS - 15 TYPE - LED REMARKS: LED WALL MOUNTED SIGN LIGHTER. COORDINATE ELEVATIONS AND LOCATION WITH ARCHITECTURAL ELEVATIONS.
S2	MANUF#NUMBER: LSICRUS-SC-LED-V4W-50-UE-WHT REMARKS: WAC LIGHTING P/N: 2005-BK VOLTAGE: 120 FINISH: BLACK LAMP: QUANTITY - 1 WATTS - 15 TYPE - LED REMARKS: 7" LED PENDANT MOUNTED CYLINDER WITH CLEAR STAIN REFLECTOR AND BLACK HOUSING. SHALL BE ENERGY STAR RATED AND HAVE 0-10V DIMMING. COLOR TEMPERATURE SHALL BE 3000K.	II (FLAMING ARROW AND BUNKA)	MANUF#NUMBER: SFLIGHTINGSEW-12146-3FT-L43W-AN08-120-277V-30K-3FT-RUN-OAP-14-DF-MCS VOLTAGE: 120 FINISH: BLACK LAMP: QUANTITY - 1 WATTS - 15 TYPE - LED REMARKS: LED WALL MOUNTED SIGN LIGHTER. COORDINATE ELEVATIONS AND LOCATION WITH ARCHITECTURAL ELEVATIONS. PROVIDE THIS FOR THE FLAMING ARROW.
X	MANUF#NUMBER: WAC LIGHTING P/N: 2005-BK VOLTAGE: 120 FINISH: BLACK LAMP: QUANTITY - 1 WATTS - 15 TYPE - LED REMARKS: 7" LED PENDANT MOUNTED CYLINDER WITH CLEAR STAIN REFLECTOR AND BLACK HOUSING. SHALL BE ENERGY STAR RATED AND HAVE 0-10V DIMMING. COLOR TEMPERATURE SHALL BE 3000K.	JJ	MANUF#NUMBER: MODERN FORMS CI-W5-WT0612 VOLTAGE: 120 FINISH: BLACK LAMP: QUANTITY - 1 WATTS - 5 TYPE - LED REMARKS: LED WALL MOUNTED ACCENT LIGHT. COORDINATE ELEVATIONS AND LOCATIONS WITH ARCHITECTURAL ELEVATIONS.
Y1	MANUF#NUMBER: LITHONIA LIGHTING DSX0-LED-P5-50K-70CRI-14MMVOLT-SPA-ALTAR2-PRH-NHS-DOBXD VOLTAGE: 208 FINISH: DARK BRONZE LAMP: QUANTITY - 1 WATTS - 80 TYPE - LED REMARKS: LED POLE MOUNTED FIXTURE WITH SEGMENTED ALUMINUM OPTICS AND HOUSE SIDE SHELD. 17.5' TALL SQUARE STRAIGHT STEEL POLE, LITHONIA SSS-25-SG-DM19-DOB.		
Y2	MANUF#NUMBER: LITHONIA LIGHTING DSX0-LED-P5-50K-70CRI-14MMVOLT-SPA-ALTAR2-PRH-NHS-DOBXD VOLTAGE: 208 FINISH: DARK BRONZE LAMP: QUANTITY - 1 WATTS - 80 TYPE - LED REMARKS: LED POLE MOUNTED FIXTURE WITH SEGMENTED ALUMINUM OPTICS AND HOUSE SIDE SHELD. 17.5' TALL SQUARE STRAIGHT STEEL POLE, LITHONIA SSS-25-SG-DM19-DOB.		
Y3	MANUF#NUMBER: LITHONIA LIGHTING DSX0-LED-P5-50K-70CRI-14MMVOLT-SPA-ALTAR2-PRH-NHS-DOBXD VOLTAGE: 208 FINISH: DARK BRONZE LAMP: QUANTITY - 1 WATTS - 80 TYPE - LED REMARKS: LED POLE MOUNTED FIXTURE WITH SEGMENTED ALUMINUM OPTICS AND HOUSE SIDE SHELD. 17.5' TALL SQUARE STRAIGHT STEEL POLE, LITHONIA SSS-25-SG-DM19-DOB.		
Y4	MANUF#NUMBER: LITHONIA LIGHTING DSX0-LED-P5-50K-70CRI-14MMVOLT-SPA-ALTAR2-PRH-NHS-DOBXD VOLTAGE: 208 FINISH: DARK BRONZE LAMP: QUANTITY - 1 WATTS - 80 TYPE - LED REMARKS: LED POLE MOUNTED FIXTURE WITH SEGMENTED ALUMINUM OPTICS AND HOUSE SIDE SHELD. 17.5' TALL SQUARE STRAIGHT STEEL POLE, LITHONIA SSS-25-SG-DM19-DOB.		
AA	MANUF#NUMBER: PERFORMANCE LIGHTING 75400-NS-310374 VOLTAGE: 120 FINISH: BLACK LAMP: QUANTITY - 1 WATTS - 24 TYPE - LED REMARKS: GROUND MOUNTED LIGHTING FIXTURE. PROVIDE WITH NON-SLIP LENS. REFER TO DETAIL 2 ON E3.2 FOR CONCRETE MOUNTING.		



4 POLE FOUNDATION DETAIL FIXTURE TYPE "Y"

N.T.S.

SEAL:
JUSTIN LOWE MUNDSELL
No. 70700
STATE OF FLORIDA
PROFESSIONAL ENGINEER
JUSTIN LOWE MUNDSELL - FL70700
FIELD VERIFICATION:
The Contractor shall verify all figured dimensions and conditions at the project site and notify Zebra Architecture, PLLC of any dimensional errors, omissions or discrepancies before beginning or fabricating any work. Do not scale these drawings.
COPYRIGHT © 2024:
Zebra Architecture, PLLC shall retain all common law, statutory and all other reserved rights. Neither the documents nor the information herein is to be reproduced, distributed, disclosed or otherwise without the written consent of Zebra Architecture, PLLC.

CONSULTANT:
SGM ENGINEERING
CA-0006208
935 LAKE BALDWIN LANE
ORLANDO, FL 32814
TEL: 407-767-5188
FAX: 407-767-5772
WWW.SGMENGINEERING.COM
COPYRIGHT © 2020 SGM ENGINEERING, INC.
SGM #2024-194

Raising Cane's
CHICKEN FINGERS
PROTOTYPE P4E-AV
SCHEME A of B
VERSION 2024-1.0

RAISING CANE'S
RESTAURANT NO.: #1307
14025 BISCAYNE BLVD.
(BISCAYNE BLVD & 143RD ST)
N. MIAMI BEACH, FLORIDA 33154

REV	DATE	DESCRIPTION
-	10.18.24	INITIAL SUBMITTAL
▲	12.16.24	TRAC 1 RESUBMITTAL

DRAWN BY:
CHECKED BY:
ARCH. PROJECT NO.:
P4E-AV
SHEET NAME:
SITE PHOTOMETRIC PLAN
SHEET NUMBER:
E1.02

