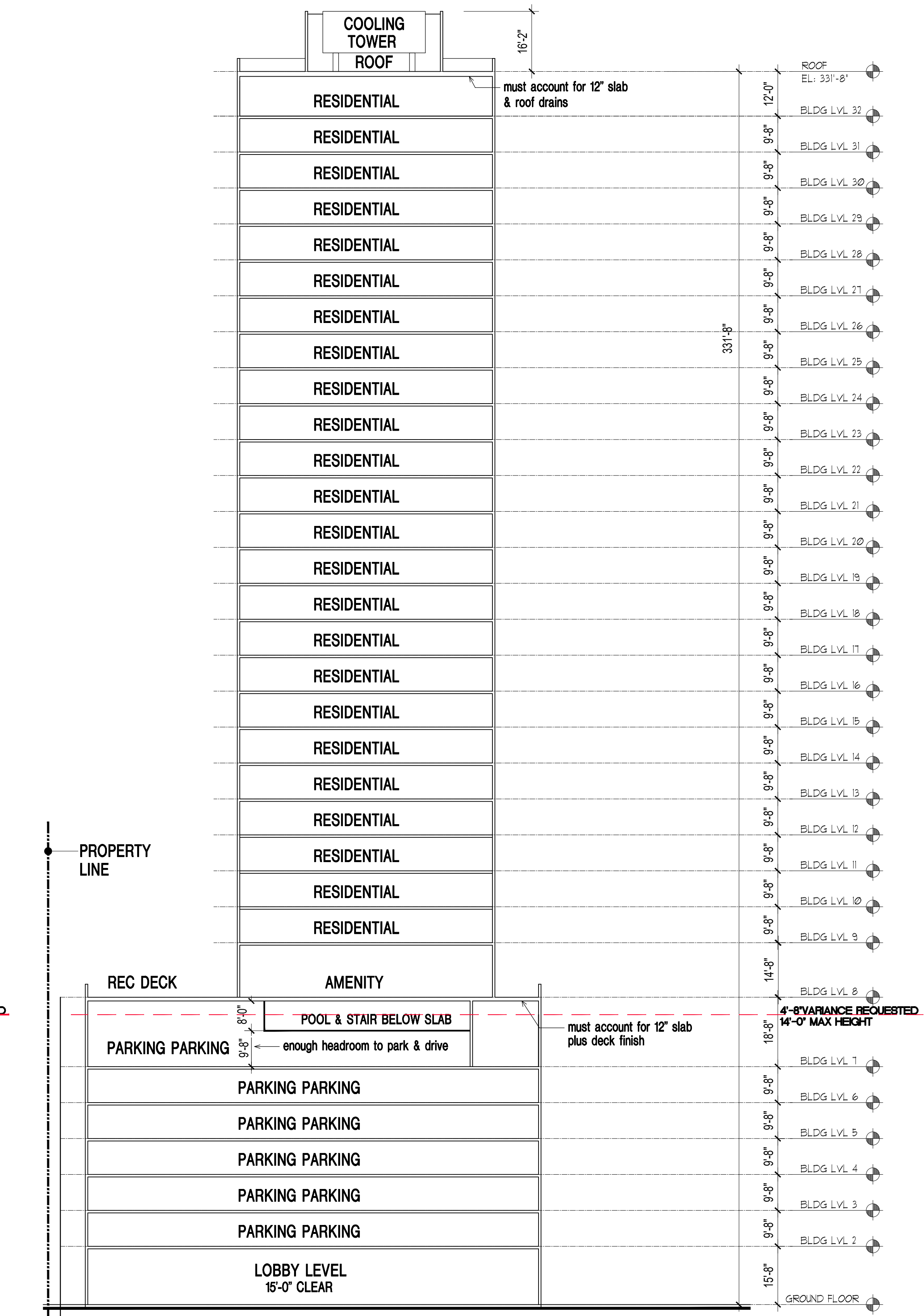
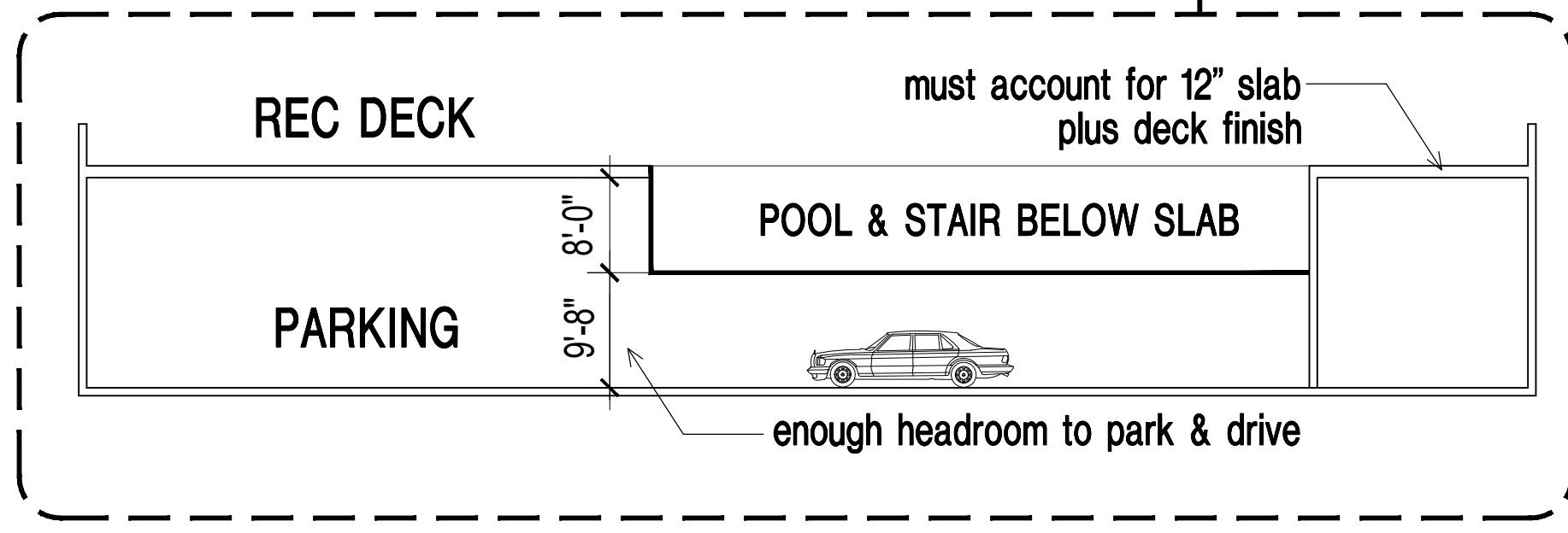


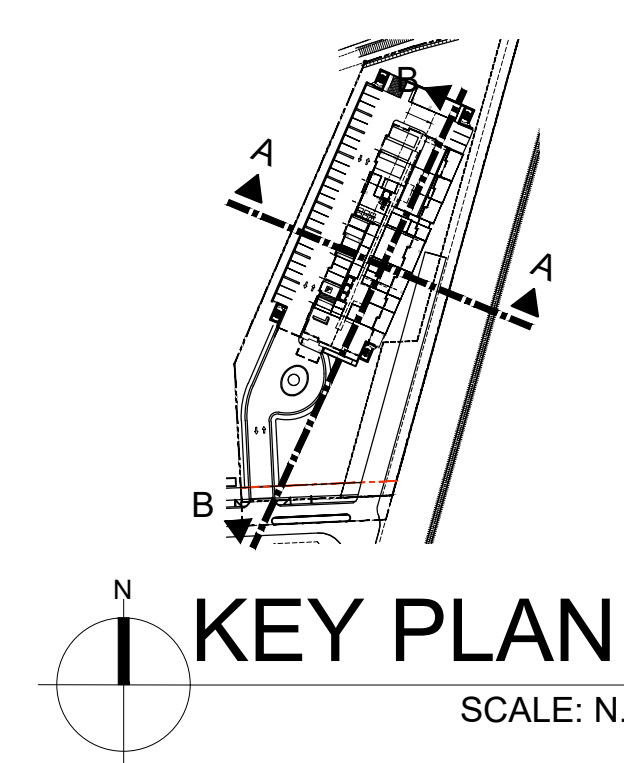
BUILDING SECTION

SECTION B-B SCALE: 1"=20'-0"
 0' 5' 15' 25' 50'



BUILDING SECTION

SECTION A-A SCALE: 1"=20'-0"
 0' 5' 15' 25' 50'



KEY PLAN
 SCALE: N.T.S.

COHEN • FREEDMAN • ENCINOSA & ASSOC.
Architects, PA
 8085 N.W. 155th Street Miami Lakes, Florida 33016 305-826-3999

PLANNING AND ZONING BOARD REVIEW
BH 164
 2261 NE 164TH STREET, NORTH MIAMI BEACH, FL
 BUILDING SECTIONS

revisions:
drawn by: LF/SP/JG/KM/AB
date: 7/28/2022
sheet no: A5.0
project: 3903



VIEW LOOKING NORTH

COHEN • FREEDMAN • ENCINOSA & ASSOC.
Architects, PA

8085 N.W. 155th Street Miami Lakes, Florida 33016 305-826-3999

PLANNING AND ZONING BOARD REVIEW

BH 164

2261 NE 164TH STREET, NORTH MIAMI BEACH, FL

RENDERINGS

revision:

drawn by: LF/SP/JG/KM/AB

date: 1/28/2022

sheet no:

A6.0

project: 3903



VIEW LOOKING NORTH



VIEW LOOKING SOUTH

COHEN • FREEDMAN • ENCINOSA & ASSOC.
Architects, PA

8085 N.W. 155th Street Miami Lakes, Florida 33016 305-826-3999

PLANNING AND ZONING BOARD REVIEW

BH 164

2261 NE 164TH STREET, NORTH MIAMI BEACH, FL

RENDERINGS

drawn by: LF/SP/JG/KM/AB

date: 1/28/2022

sheet no:

A6.1

project: 3903



VIEW LOOKING SOUTH

COHEN • FREEDMAN • ENCINOSA & ASSOC.
Architects, PA

8085 N.W. 155th Street Miami Lakes, Florida 33016 305-826-3999

PLANNING AND ZONING BOARD REVIEW
BH 164
 2261 NE 164TH STREET, NORTH MIAMI BEACH, FL
 RENDERINGS

revisions:

drawn by: LF/SP/JG/KM/AB

date: 1/28/2022

sheet no:

A6.2

project: 3903



VIEW LOOKING NORTHWEST



VIEW LOOKING NORTHEAST

COHEN • FREEDMAN • ENCINOSA & ASSOC.
Architects, PA
 8085 N.W. 155th Street Miami Lakes, Florida 33016 305-826-3999

PLANNING AND ZONING BOARD REVIEW
BH 164
 2261 NE 164TH STREET, NORTH MIAMI BEACH, FL
 RENDERINGS

revisions:

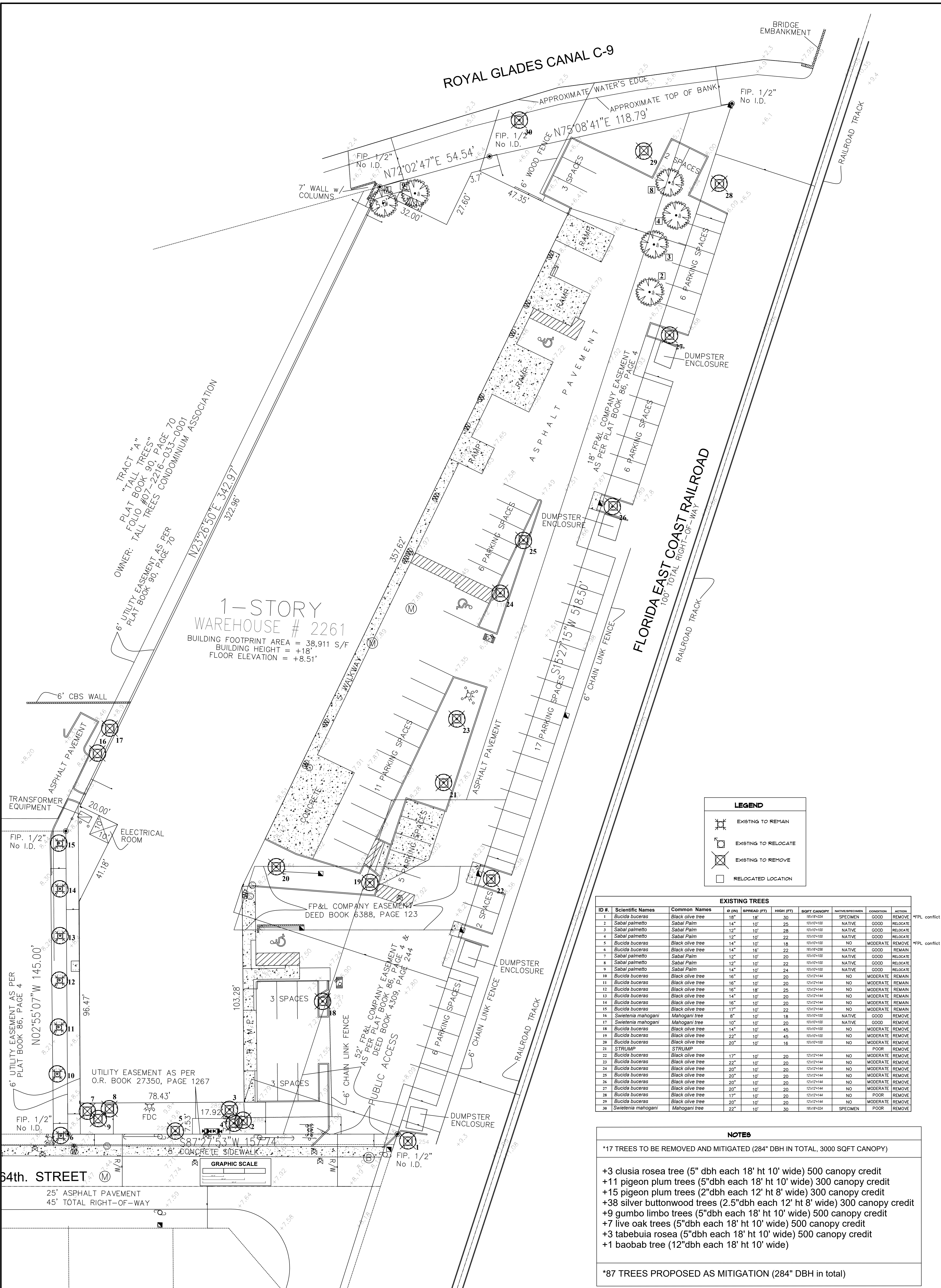
drawn by: LF/SP/JG/KM/AB

date: 1/28/2022

sheet no:

A6.3

project: 3903



1-STORY WAREHOUSE # 2261
 BUILDING FOOTPRINT AREA = 38,911 S/F
 BUILDING HEIGHT = +18'
 FLOOR ELEVATION = +8.51'

LEGEND

- EXISTING TO REMAIN
- EXISTING TO RELOCATE
- EXISTING TO REMOVE
- RELOCATED LOCATION

EXISTING TREES

ID #	Scientific Names	Common Names	D (IN)	SPREAD (FT)	HIGH (FT)	SOFT CANOPY	NATIVE/SPECIMEN	CONDITION	ACTION
1	Bucida buceras	Black olive tree	18"	18'	30'	1818*324	SPECIMEN	GOOD	REMOVE
2	Sabal palmetto	Sabal Palm	14"	10'	25'	1010*100	NATIVE	GOOD	RELOCATE
3	Sabal palmetto	Sabal Palm	12"	10'	28'	1010*100	NATIVE	GOOD	RELOCATE
4	Sabal palmetto	Sabal Palm	12"	10'	22'	1010*100	NATIVE	GOOD	RELOCATE
5	Bucida buceras	Black olive tree	14"	10'	18'	1010*100	NO	MODERATE	REMOVE
6	Bucida buceras	Black olive tree	14"	16'	22'	1616*256	NATIVE	GOOD	REMAIN
7	Sabal palmetto	Sabal Palm	12"	10'	20'	1010*100	NATIVE	GOOD	RELOCATE
8	Sabal palmetto	Sabal Palm	12"	10'	22'	1010*100	NATIVE	GOOD	RELOCATE
9	Sabal palmetto	Sabal Palm	14"	10'	24'	1010*100	NATIVE	GOOD	RELOCATE
10	Bucida buceras	Black olive tree	16"	10'	20'	1212*144	NO	MODERATE	REMAIN
11	Bucida buceras	Black olive tree	16"	10'	20'	1212*144	NO	MODERATE	REMAIN
12	Bucida buceras	Black olive tree	16"	18'	25'	1212*144	NO	MODERATE	REMAIN
13	Bucida buceras	Black olive tree	14"	10'	20'	1212*144	NO	MODERATE	REMAIN
14	Bucida buceras	Black olive tree	16"	10'	20'	1212*144	NO	MODERATE	REMAIN
15	Bucida buceras	Black olive tree	17"	10'	22'	1212*144	NO	MODERATE	REMAIN
16	Swietenia mahogany	Mahogany tree	8"	10'	18'	1010*100	NATIVE	GOOD	REMOVE
17	Swietenia mahogany	Mahogany tree	10"	10'	20'	1010*100	NATIVE	GOOD	REMOVE
18	Bucida buceras	Black olive tree	14"	10'	45'	1010*100	NO	MODERATE	REMOVE
19	Bucida buceras	Black olive tree	22"	10'	45'	1010*100	NO	MODERATE	REMOVE
20	Bucida buceras	Black olive tree	20"	10'	16'	1010*100	NO	MODERATE	REMOVE
21	STRUMP	STRUMP						POOR	REMOVE
22	Bucida buceras	Black olive tree	17"	10'	20'	1212*144	NO	MODERATE	REMOVE
23	Bucida buceras	Black olive tree	22"	10'	20'	1212*144	NO	MODERATE	REMOVE
24	Bucida buceras	Black olive tree	20"	10'	20'	1212*144	NO	MODERATE	REMOVE
25	Bucida buceras	Black olive tree	20"	10'	20'	1212*144	NO	MODERATE	REMOVE
26	Bucida buceras	Black olive tree	20"	10'	20'	1212*144	NO	MODERATE	REMOVE
27	Bucida buceras	Black olive tree	20"	10'	20'	1212*144	NO	MODERATE	REMOVE
28	Bucida buceras	Black olive tree	17"	10'	20'	1212*144	NO	POOR	REMOVE
29	Bucida buceras	Black olive tree	20"	10'	20'	1212*144	NO	MODERATE	REMOVE
30	Swietenia mahogany	Mahogany tree	22"	10'	30'	1818*324	SPECIMEN	POOR	REMOVE

NOTES

*17 TREES TO BE REMOVED AND MITIGATED (284" DBH IN TOTAL, 3000 SQFT CANOPY)

+3 clusia rosea tree (5" dbh each 18' ht 10' wide) 500 canopy credit
 +11 pigeon plum trees (5"dbh each 18' ht 10' wide) 300 canopy credit
 +15 pigeon plum trees (2"dbh each 12' ht 8' wide) 300 canopy credit
 +38 silver buttonwood trees (2.5"dbh each 12' ht 8' wide) 300 canopy credit
 +9 gumbo limbo trees (5"dbh each 18' ht 10' wide) 500 canopy credit
 +7 live oak trees (5"dbh each 18' ht 10' wide) 500 canopy credit
 +3 tabebuia rosea (5"dbh each 18' ht 10' wide) 500 canopy credit
 +1 baobab tree (12"dbh each 18' ht 10' wide)

*87 TREES PROPOSED AS MITIGATION (284" DBH IN TOTAL)

LA.00	SHEET NUMBER	THERESA WYMER LA06067505	SCALE GRAPHIC	DRAWN ROBERTO CR	DESIGN MERCEDES PORCARI	REVISION	ISSUE DATE 07-06-2022	SHEET TITLE TREE DISPOSITION PLAN	<p>NMB RESIDENTIAL 2261 NE 164th St, North Miami Beach, FL 33160</p>	<p>EXOTICSCAPE & ASSOCIATES LANDSCAPE ARCHITECTURE</p> <p>181 Harbor Dr. Key Biscayne, FL 33149 (305)785-8256 LA Theresa Wymer LA06067505 Mercedes B. Porcari</p>
--------------	--------------	-----------------------------	-------------------------	----------------------------	-----------------------------------	----------	---------------------------------	---	---	--

LANDSCAPE LEGEND
 TRANSECT ZONE: MUITC, FULFORD MIXED USE TOWN CENTER LOT AREA: 85,334 SF ACRES: 1.958

OPEN SPACE
 A SQUARE FEET OF REQUIRED LANDSCAPE AREA, AS INDICATED ON SITE PLAN
 REFER TO SITE PLAN 20% MIN 17066.8 42667 SF (50%)

TREES
 A NUMBER OF TREES REQUIRED PER LOT ACRE, LESS EXISTING NUMBER OF TREE MEETING MINIMUM REQUIREMENTS = 28 TREES PER ACRE
 B. 25% PALMS REQUIRED: NUMBER OF TREE PROVIDED = 14 14
 C. 5% NATIVES REQUIRED: NUMBER OF TREE PROVIDED 50% = 28 28
 D. 5% DROUGHT TOLERANT AND LOW MAINTENANCE: NUMBER OF TREE PROVIDED X 50% = 28 30
 E. STREET TREES (MAXIMUM AVERAGE SPACING OF 30' O.C.)
 LN FT ALONG STREET = 6 TREES (BAYRUM TREES DIRECTLY UNDER POWERLINES) 6 6
 TOTAL REQUIRED TREES 55 LOT TREES + 6 STREET TREES = 61 TREES

SHRUBS
 A. NUMBER OF SHRUBS REQUIRED: NUMBER OF TREES REQUIRED X 10 = 610 610
 B. 5% NATIVE SHRUBS REQUIRED: NUMBER OF SHRUBS PROVIDED X 50% = 305 305

*PROPOSED LOT TREES (56)
 +13 MEDJOL PALM
 +6 SABAL PALM
 +11 PIGEON PLUM
 +3 SEACRAPE
 +16 GUMBO LIMBO
 +9 CLUSIA ROSEA
 +7 LIME OAKS
 +6 PINK TABEBUIA
 +3 SILK FLOSS CEIBA
 +1 BRIDALVEIL TREE
 +1 BAOBAB TREE

**PROPOSED SHRUBS (610)
 +85 JAMAICAN CAPER
 +70 SPANISH STOPPER
 +250 GREEN ISLAND FICUS
 +85 DWARF PINK OLEANDER
 +82 COCCOPLUM
 +75 SILVER BUTTWOOD

6 BAYRUM TREES AS STREET TREES 18'HT 5" CAL 8" SP



NOTE:
 *All required trees shall be field grown and have a minimum caliper or diameter at breast height (D.B.H.) of five (5) inches and be a minimum of eighteen (18) feet in height and eight (8) to ten (10) feet in spread at time of planting

NOTE:
 Front lot Publicly accessible open space (Plaza configuration)
 12,790 sqft total area
 2,220 sqft paved surface (17.3% of total area)
 10,570 sqft green area
 Back lot Publicly accessible open space (Plaza configuration)
 8,275 sqft total area
 3,138 sqft paved surface (37.9% of total area)
 5,137 sqft green area
 22' wide Canal Greenway,
 10' wide boardwalk,
 90% percent of the length of the portion of the greenway within the setback is landscaped and consists of zoysia sod and fakahatchee grass (ornamental grass)

PLANT LIST
TREES & PALMS

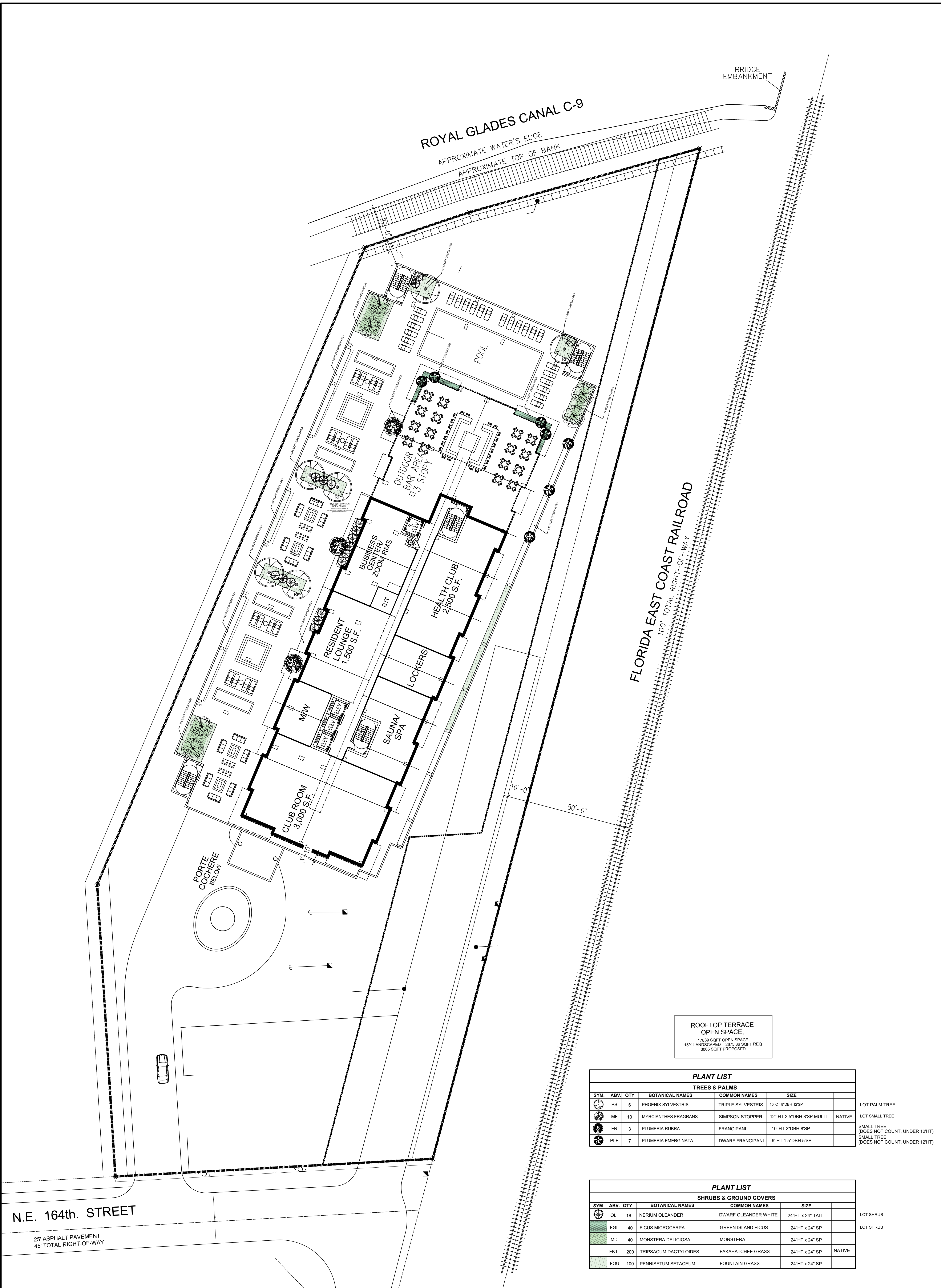
SYM	QTY	BOTANICAL NAMES	COMMON NAMES	SIZE
MJ	13	PHOENIX MEDJOL	MEDJOL PALM	18' CT 25HT OA (LARGE PALM)
CR	9	CLUSIA ROSEA	CLUSIA TREE	18' HT 5" CAL 8" SP NATIVE
PP	15	COCCOLOBA DIVERSIFOLIA	PIGEON PLUM	12' HT 2" CAL 8" SP NATIVE
PP*	11	COCCOLOBA DIVERSIFOLIA	PIGEON PLUM (TALL)	18' HT 5" CAL 10" SP NATIVE
BS	10	BURSERIA SIMARUBA	GUMBO LIMBO	18' HT 5" CAL 10" SP NATIVE
SF	3	CEIBA SPECIOSA	SILK FLOSS CEIBA	18' HT 8" CAL 8" SP
CC	3	COCCOLOBA UVIFERA	SEA GRAPE	18' HT 5" CAL 8" SP MULTI NATIVE
YWT	6	TABEBUIA CHRYSOTRICHIA	YELLOW TABEBUIA	18' HT 5" CAL 8" SP SINGLE
OK	7	QUERCUS VIRGINIANA	LIVE OAK	18' HT 5" CALIFER 8" SP SINGLE NATIVE
SP*	6	SABAL PALMETTO	SABAL PALM	10' CT SINGLE TRUNK 6 OF THEM ARE 25HT AND 16CT NATIVE
SP*	6	SABAL PALMETTO	SABAL PALM	10' CT SINGLE TRUNK 6 OF THEM ARE 25HT AND 16CT NATIVE
ALE	3	ARCHONTOPHOENIX ALEXANDRAE	TRIPLE ALEXANDER PALM	10' CT 15HT TRIPLE TRUNK
TAB	3	TABEBUIA ROSEA	PINK TABEBUIA	18' HT 5" CAL 8" SP
TP	7	RAVENALA MADAGASCARIENSIS	TRAVELER PALM	10' HT MULTI 10" SP
FR	2	PLUMERIA RUBRA	FRANGIPANI	10' HT 2" DBH 8" SP
CAG	1	CAESALPINIA GRANADILLO	BRIDALVEIL TREE	18' HT 5" CAL 8" SP
CN	3	COCOS NUCIFERA	COCONUT PALM	10' 16" CT 20HT SINGLE TRUNK
BAC	1	ADANSONIA DIGITATA	BAOBAB TREE	18' HT 12" DBH 12" SP SPECIMEN
PS	1	PHOENIX SYLVESTRIS	TRIPLE SYLVESTRIS	20' HT 12" SP MULTI SPECIMEN
CMY	10	LAGERSTROEMIA INDICA	GRAPE MYRTLE	12' HT 2.5" DBH MULTI 8" SP

*19 QUALIFYING LOT PALM TREES + 50 QUALIFYING LOT TREES = 56 TREES (every 3 palms counts as 1 tree)
 *25% QUALIFYING LOT PALM TREES ARE PROPOSED

PLANT LIST
SHRUBS & GROUND COVERS

SYM	QTY	BOTANICAL NAMES	COMMON NAMES	SIZE
MF	16	MYRCIANTHES FRAGRANS	SIMPSON STOPPER	10" HT 2" DBH MULTI NATIVE
SBU	38	CONOCARPUS ERECTUS	SILVER BUTTWOOD	10HT X MULTI X 4" SPREAD NATIVE
LIG	10	LIGUSTRUM JAPONICUM	LIGUSTRUM	10' HT MULTI 10" SP
OL	85	NERIUM OLEANDER	DWARF OLEANDER	24" HT X 24" TALL
SS	70	EUGENIA FOETIDA	SPANISH STOPPER BUSH	30" HT X 30" TALL NATIVE
JC	85	CAPPARIS CYNOPHALLOPHORA	JAMAICAN CAPER	4HT X 3" SP NATIVE
FGI	250	FICUS MICROCARPA	GREEN ISLAND FICUS	24" HT X 24" SP
CCP	82	CHRYSOBALANUS ICACOS	COCOPLUM	24" HT X 24" SP NATIVE
MD	30	MONSTERA DELICIOSA	MONSTERA	24" HT X 24" SP
FKT	500	TRIPSACUM DACTYLOIDES	FAKAHATCHEE GRASS	24" HT X 24" SP NATIVE
FOU	400	PENNISETUM SETACEUM	FOUNTAIN GRASS	24" HT X 24" SP

LA.01	THEIRRS WYMER LA0607305	SEAL	SCALE GRAPHIC	DRAWN ROBERTO CR	DESIGN MERCEDES PORCARI	REVISION 09-21-2022	ISSUE DATE 07-06-2022	SHEET TITLE LANDSCAPE PLAN LOT FRONT	<p style="text-align: center;">NMB RESIDENTIAL 2261 NE 164th St, North Miami Beach, FL 33160</p>	<p style="text-align: center;">EXOTICSCAPE & ASSOCIATES LANDSCAPE ARCHITECTURE</p> <p style="text-align: center;">181 Harbor Dr. Key Biscayne, FL 33149 (305)785-8256 LA Theresa Wymer LA6667363 Mercedes B. Porcari</p>
--------------	----------------------------	------	-------------------------	----------------------------	-----------------------------------	-------------------------------	---------------------------------	--	---	---



ROOFTOP TERRACE
OPEN SPACE,
17,839 SQFT OPEN SPACE
15% LANDSCAPED = 267,538 SQFT REQ
3,062 SQFT PROPOSED

PLANT LIST					
TREES & PALMS					
SYM.	ABV.	QTY	BOTANICAL NAMES	COMMON NAMES	SIZE
PS	6		PHOENIX SYLVESTRIS	TRIPLE SYLVESTRIS	10' CT 6"DBH 12'SP
MF	10		MYRCIANTHES FRAGRANS	SIMPSON STOPPER	12' HT 2.5"DBH 8'SP MULTI NATIVE
FR	3		PLUMERIA RUBRA	FRANGIPANI	10' HT 2"DBH 8'SP
PLE	7		PLUMERIA EMERGINATA	DWARF FRANGIPANI	6' HT 1.5"DBH 5'SP

LOT PALM TREE
LOT SMALL TREE
SMALL TREE (DOES NOT COUNT, UNDER 12HT)
SMALL TREE (DOES NOT COUNT, UNDER 12HT)

PLANT LIST					
SHRUBS & GROUND COVERS					
SYM.	ABV.	QTY	BOTANICAL NAMES	COMMON NAMES	SIZE
OL	18		NERIUM OLEANDER	DWARF OLEANDER WHITE	24"HT x 24" TALL
FGI	40		FICUS MICROCARPA	GREEN ISLAND FICUS	24"HT x 24" SP
MD	40		MONSTERA DELICIOSA	MONSTERA	24"HT x 24" SP
FKT	200		TRIPSACUM DACTYLOIDES	FAKAHATCHEE GRASS	24"HT x 24" SP NATIVE
FOU	100		PENNISETUM SETACEUM	FOUNTAIN GRASS	24"HT x 24" SP

LOT SHRUB
LOT SHRUB

N.E. 164th. STREET

25' ASPHALT PAVEMENT
45' TOTAL RIGHT-OF-WAY

SHEET TITLE LANDSCAPE PLAN LOT FRONT	DESIGN MERCEDES PORCARI	REVISION	ISSUE DATE 07-06-2022	DRAWN ROBERTO CR	SCALE GRAPHIC	SEAL
	THERESA WYMER LA0667363					
SHEET NUMBER LA.02	NMB RESIDENTIAL 2261 NE 164th St, North Miami Beach, FL 33160			EXOTICSCAPE & ASSOCIATES LANDSCAPE ARCHITECTURE 181 Harbor Dr. Key Biscayne, FL, 33149 (305)785-8256 LA Theresa Wymer LA6667363 Mercedes B.Porcari		

NORTH MIAMI BEACH TOWER

Index of Lighting Design Drawings

SHEET	DESCRIPTION
LD-100.1	FIXTURE SCHEDULE
LD-101	GROUND LEVEL LIGHTING PLAN
LD-102	2ND-3RD PARKING LEVEL LIGHTING PLAN
LD-103	4TH-7TH PARKING LEVEL LIGHTING PLAN
LD-104	8TH LEVEL LIGHTING PLAN
LD-201	GROUND LEVEL SITE PHOTOMETRICS
LD-202	GROUND LEVEL PARKING PHOTOMETRICS
LD-203	2ND-3RD LEVEL PARKING PHOTOMETRICS
LD-204	4TH-7TH LEVEL PARKING PHOTOMETRICS
LD-205	8TH LEVEL PHOTOMETRICS

PLANNING AND ZONING BOARD REVIEW

BH 164

2261 NE 164TH STREET, NORTH MIAMI BEACH, FL

INDEX

revisions:
1-06/28/2022
2-07/25/2022
3-09/19/2022

drawn by: *VF*/SP/JG/KM/AB

date: 7/28/2022

sheet no:

INDEX

project: 3903

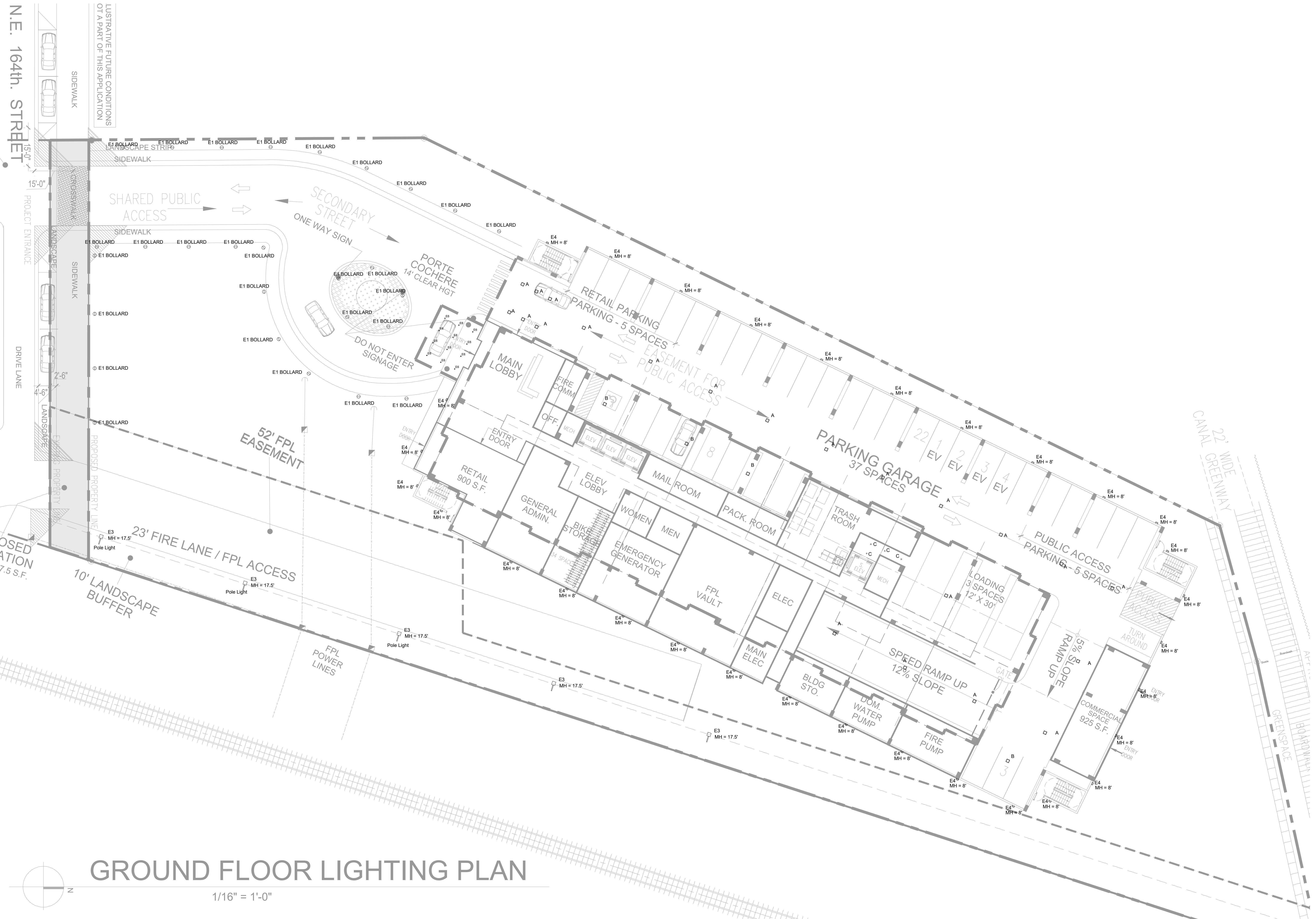
COHEN • FREEDMAN • ENCINOSA & ASSOC.
Architects, PA

8085 N.W. 155th Street Miami Lakes, Florida 33016 305-826-3999

PROJECT:	<h1 style="margin: 0;">NORTH MIAMI BEACH TOWER</h1>	
-----------------	---	---

EXTERIOR								
TYPE	MANUFACTURER	DESCRIPTION	CATALOG NUMBER	VOLTS	LAMP	MOUNTING	FINISH	COMMENTS
E1	SISTEMALUX	BOLLARD FOR PATHWAYS	S6160 W-UNV-14-D10	120-277	3000K 34W	GROUND	ALUMINUM GRAY	
E2	BEGA	BOLLARD FOR POOL DECK	84610-K3-SLV	120-277	3000K 36.3W	GROUND	SILVER	
E3	GARDCO	LIGHT POST 17.5FT	P26-140L-2100-NW-G2-AR-3-UNV; DD-F1-RPA-MGY	120-277	4000K 96W	ARM	MEDIUM GRAY	
E4	LITHONIA LIGHTING	WALL LAMP	WPX1 LED P1-40K-MVOLT-DBLXD	120-277	4000K 11W	SURFACE	BLACK	
E5	LIGMAN LIGHTING	LARGE DOWNLIGHT	UOD-80033-44W-VN-W30-02-120/277; DIM	120-277	3000K 44W	SURFACE	DARK GRAY	
E6	DMF	ENTRANCE DOWNLIGHT	DRD2M-10-9-30-FL-T; DRD2T-R-JD-S-WH	120-277	3000K 12.5W	RECESSED	WHITE	

BACK OF HOUSE								
TYPE	MANUFACTURER	DESCRIPTION	CATALOG NUMBER	VOLTS	LAMP	MOUNTING	FINISH	COMMENTS
A	CREE LIGHTING	LED PARKING GARAGE LUMINAIRE	IG-NM-5S-J-40K-UL-WH	120-277	4000K 66W	SURFACE		
B	CREE LIGHTING	LED PARKING GARAGE LUMINAIRE	IG-NM-5S-A-40K-UL-WH	120-277	4000K 33W	SURFACE		
C	DMF	MODERN CYLINDER SYSTEM	DC4-SM-W-S-D-15-FL-0-00-00-40-BA-O-00-R	120-277	4000K 20W	SURFACE	BRUSHED ALUMINUM	



GROUND FLOOR LIGHTING PLAN

1/16" = 1'-0"

revisions:
1-06/28/2022
2-07/25/2022
3-09/19/2022

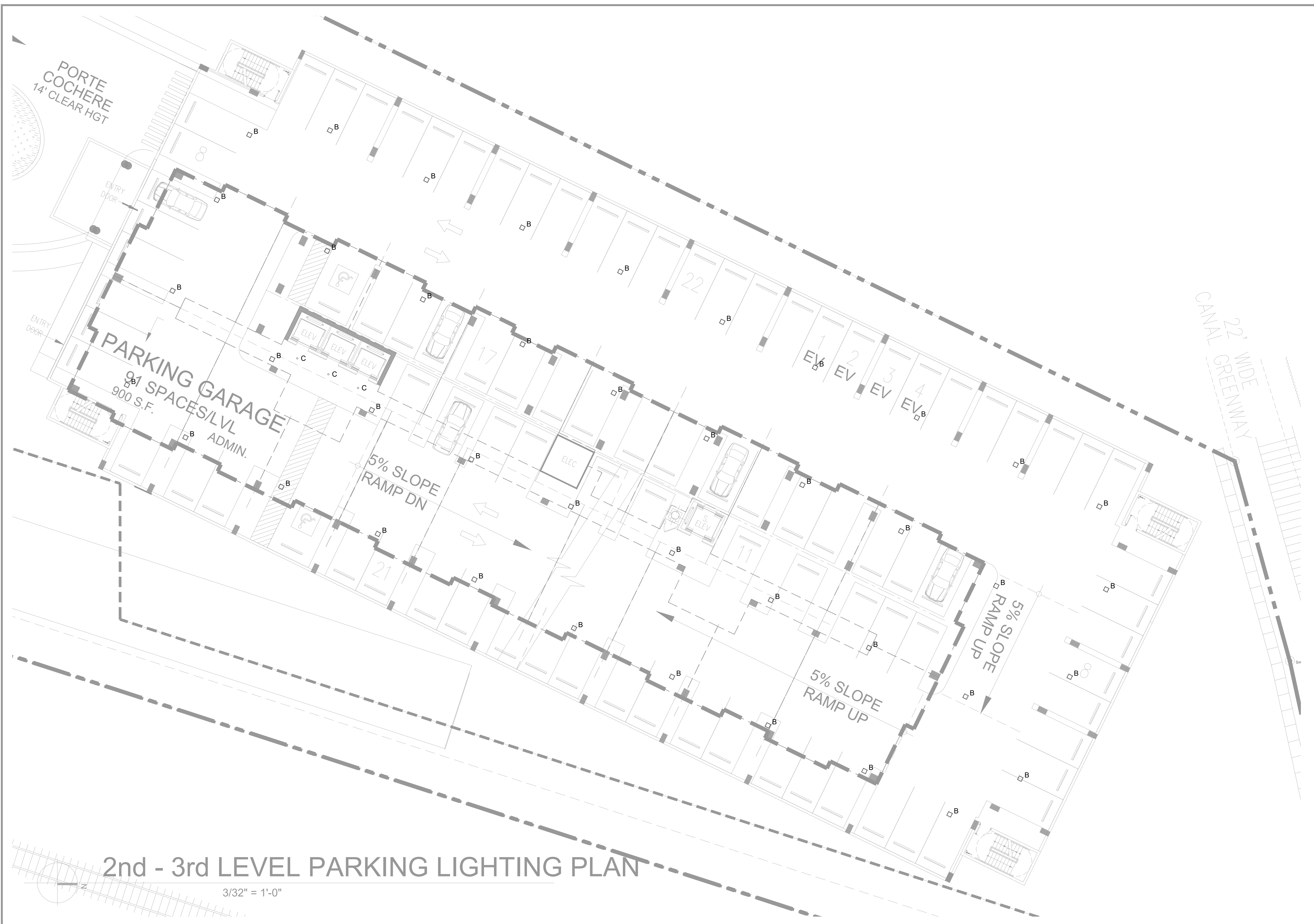
drawn by: SP/JG/KM/AB

date: 7/28/2022

sheet no:

LD-101

project: 3903



PORTE COCHERE
14' CLEAR HGT

PARKING GARAGE
91 SPACES/LVL
900 S.F.
ADMIN.

5% SLOPE
RAMP DN

5% SLOPE
RAMP UP

5% SLOPE
RAMP UP

CANAL GREENWAY
22' WIDE GREENWAY

2nd - 3rd LEVEL PARKING LIGHTING PLAN

3/32" = 1'-0"

COHEN • FREEDMAN • ENCINOSA & ASSOC.
Architects, PA
8085 N.W. 155th Street Miami Lakes, Florida 33016 305-826-3999

PLANNING AND ZONING BOARD REVIEW

BH 164

2261 NE 164TH STREET, NORTH MIAMI BEACH, FL
2ND - 3RD LEVEL PARKING LIGHTING PLAN

revisions:
1-06/28/2022
2-07/25/2022
3-09/19/2022

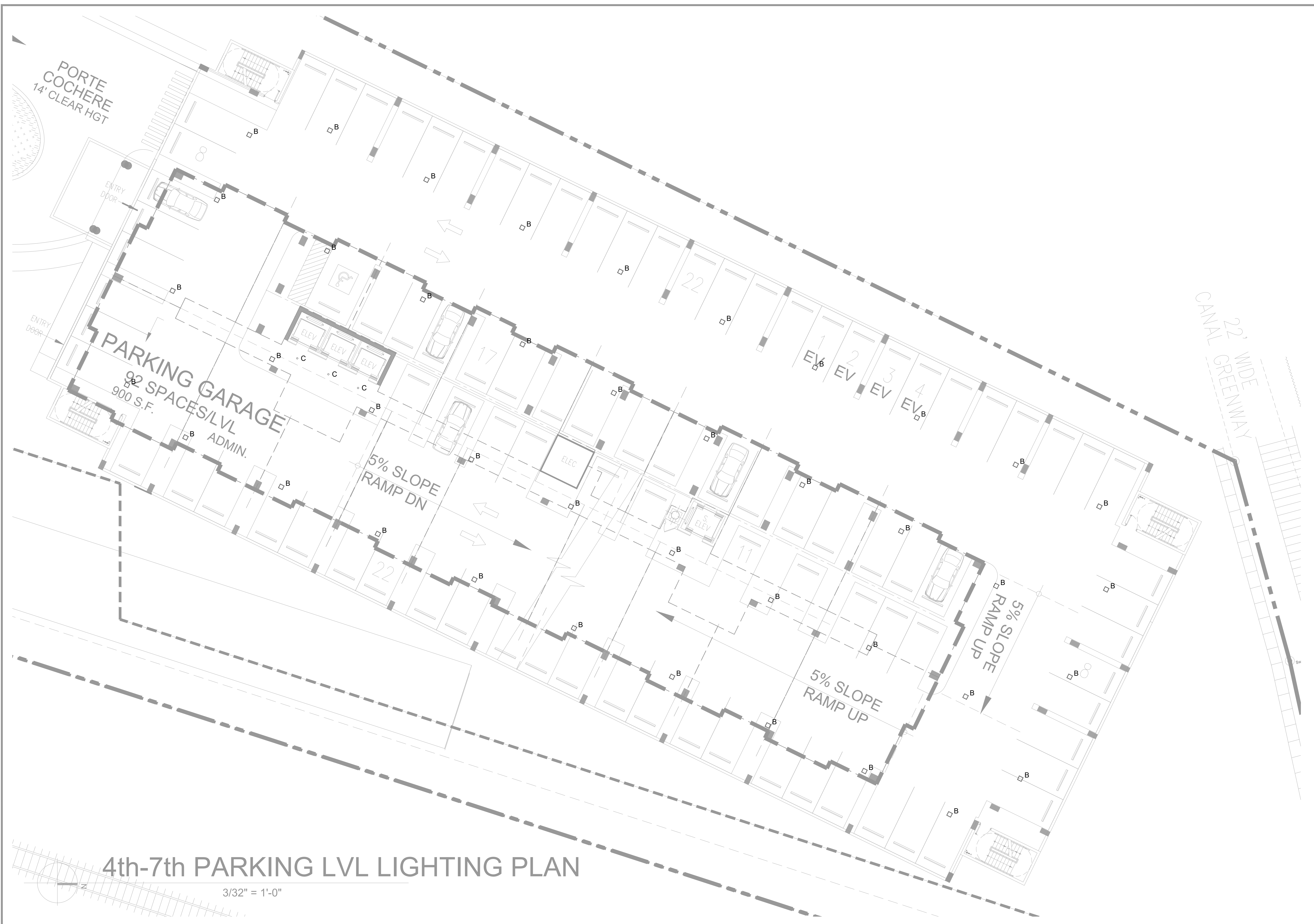
drawn by: SP/JG/KM/AB

date: 7/28/2022

sheet no:

LD-102

project: 3903



PORTE COCHERE
14' CLEAR HGT

ENTRY DOOR

ENTRY DOOR

PARKING GARAGE
92 SPACES/LVL
900 S.F. ADMIN.

5% SLOPE
RAMP DN

5% SLOPE
RAMP UP

5% SLOPE
RAMP UP

CANAL GREENWAY
22' WIDE

4th-7th PARKING LVL LIGHTING PLAN

3/32" = 1'-0"

COHEN • FREEDMAN • ENCINOSA & ASSOC.
Architects, PA
8085 N.W. 155th Street Miami Lakes, Florida 33016 305-826-3999

PLANNING AND ZONING BOARD REVIEW
BH 164
2261 NE 164TH STREET, NORTH MIAMI BEACH, FL
4TH - 7TH LEVEL PARKING LIGHTING PLAN

revisions:
1-06/28/2022
2-07/25/2022
3-09/19/2022

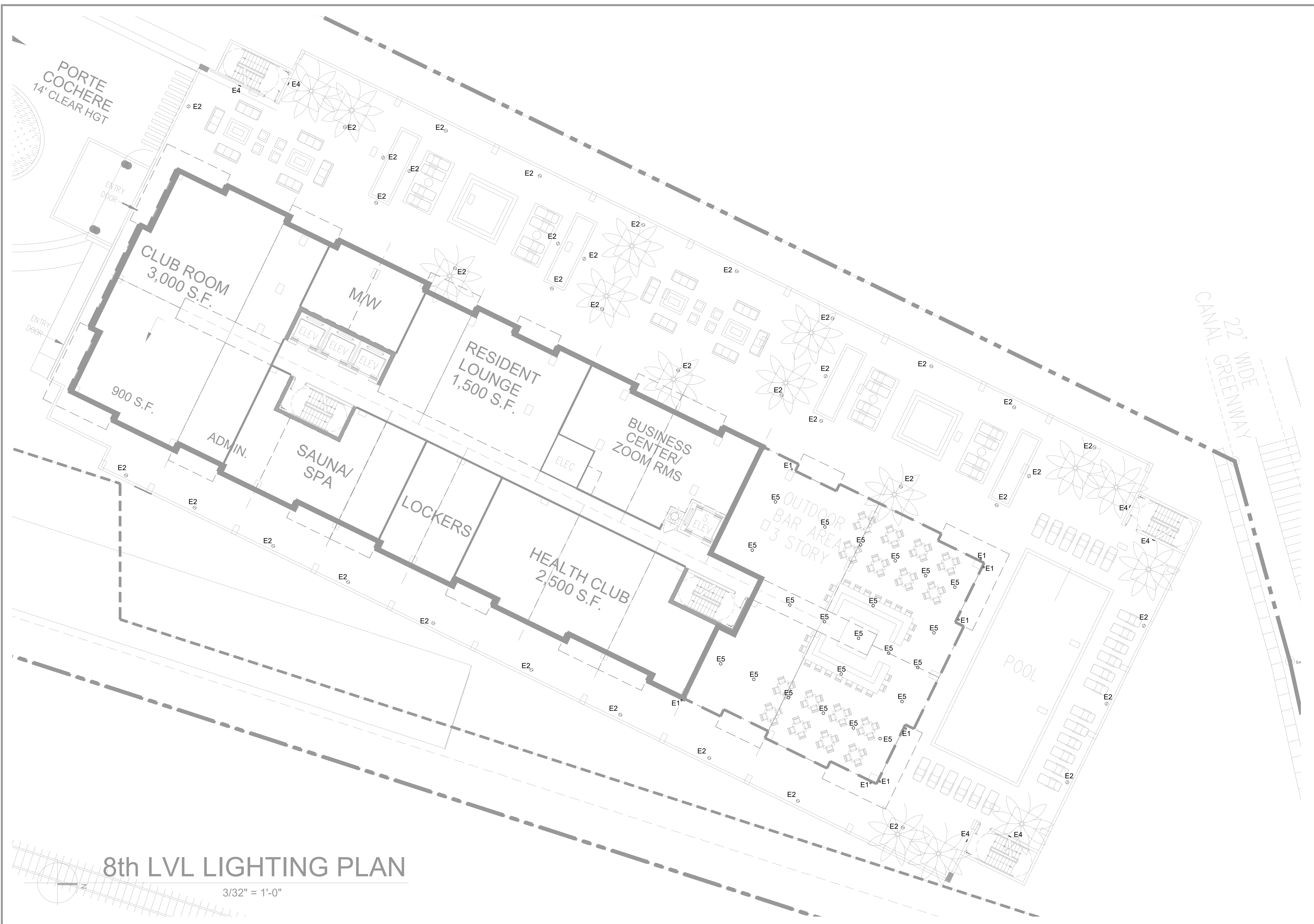
drawn by: SP/JG/KM/AB

date: 7/28/2022

sheet no:

LD-103

project: 3903



8th LVL LIGHTING PLAN

3/32" = 1'-0"

COHEN • FREEDMAN • ENCINOSA & ASSOC.
Architects, PA
8085 N.W. 155th Street Miami Lakes, Florida 33016 305-826-3999

PLANNING AND ZONING BOARD REVIEW
BH 164
2261 NE 164TH STREET, NORTH MIAMI BEACH, FL
8TH LEVEL LIGHTING PLAN

revisions:
1-06/28/2022
2-07/25/2022
3-09/19/2022

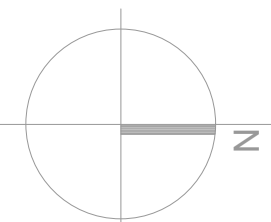
drawn by: SP/JG/KM/AB

date: 7/28/2022

sheet no:

LD-104

project: 3903



GROUND LEVEL PARKING PHOTOMETRICS

3/32" = 1'-0"



Symbol	Qty	Label	Arrangement	Description	Tag	LLF	Luminaire Lumens	Luminaire Watts	Total Watts
⊕	4	C	Single	DRD2M12940SPT-DRD2TRJDSWH		0.980	1153	14	56
⊖	4	B	Single	IG-NM-SS-A-40K-LUL-WH CONFIGURED FROM IG-NM-SS-A-30K-LUL-WH		0.980	3910	33	132
⊕	22	A	Single	IG-NM-SS-J-40K-LUL-WH		0.980	7306	68.43	1505.46

Label	CalcType	Units	Avg	Max	Min	AvgMin	MaxMin
Elevator lobby	Illuminance	Fc	16.10	26.4	8.1	2.23	3.26
Entry garage	Illuminance	Fc	30.16	38.0	23.8	1.27	1.60
Garage Area	Illuminance	Fc	6.78	23.3	2.2	3.06	10.99

PLANNING AND ZONING BOARD REVIEW
BH 164
 2261 NE 164TH STREET, NORTH MIAMI BEACH, FL
 GROUND LEVEL PARKING PHOTOMETRICS

revisions:
 1-06/28/2022
 1-07/25/2022
 3-09/19/2022

drawn by: LT/SP/JG/KM/AB

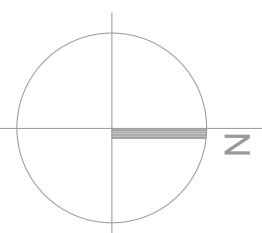
date: 7/28/2022

sheet no:

LD-202

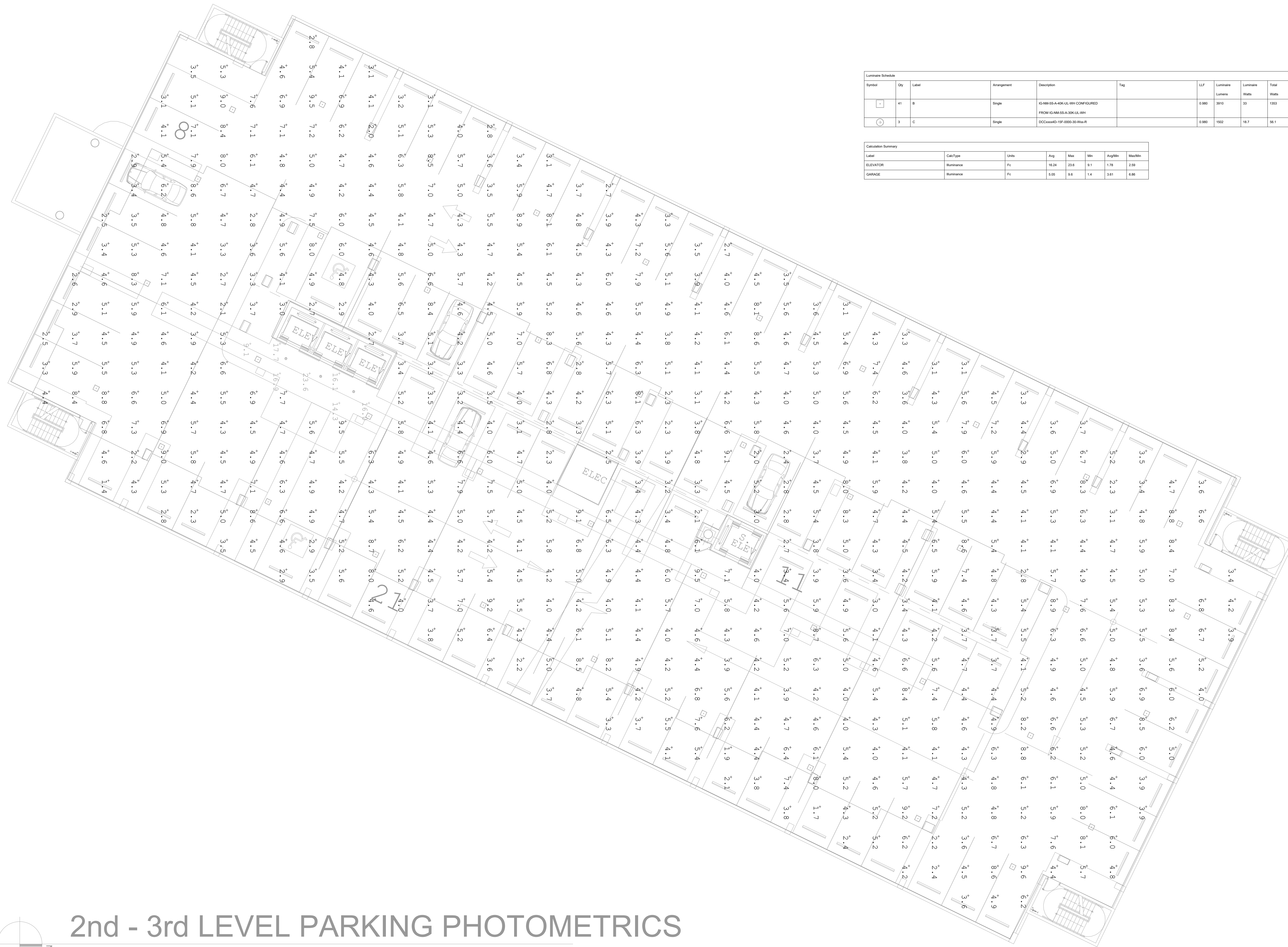
project: 3903

COHEN • FREEDMAN • ENCINOSA & ASSOC.
 Architects, PA
 8085 N.W. 155th Street Miami Lakes, Florida 33016 305-826-3999



2nd - 3rd LEVEL PARKING PHOTOMETRICS

3/32" = 1'-0"



Symbol	Qty	Label	Arrangement	Description	Tag	LF	Luminaire Lumens	Luminaire Watt	Total Watts
⊖	41	B	Single	IG-HM-SS-A-400-UL-WH CONFIGURED FROM IG-HM-SS-A-300-UL-WH		0.980	3910	33	1353
⊕	3	C	Single	DCCxxxxID-15F-0000-30-WxR		0.980	1902	18.7	56.1

Label	CalcType	Units	Avg	Max	Min	AvgMin	MaxMin
ELEVATOR	Illuminance	Fc	16.24	23.6	9.1	1.78	2.59
GARAGE	Illuminance	Fc	5.05	9.8	1.4	3.61	6.86

PLANNING AND ZONING BOARD REVIEW

BH 164

2261 NE 164TH STREET, NORTH MIAMI BEACH, FL

2ND - 3RD LEVEL PARKING PHOTOMETRICS

revisions:
1-06/28/2022
1-07/25/2022
3-09/19/2022

drawn by: SP/JG/KM/AB

date: 7/28/2022

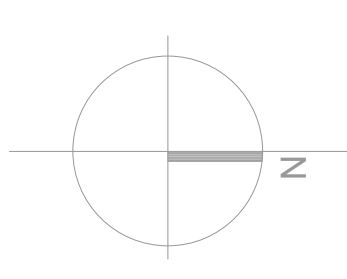
sheet no:

LD-203

project: 3903

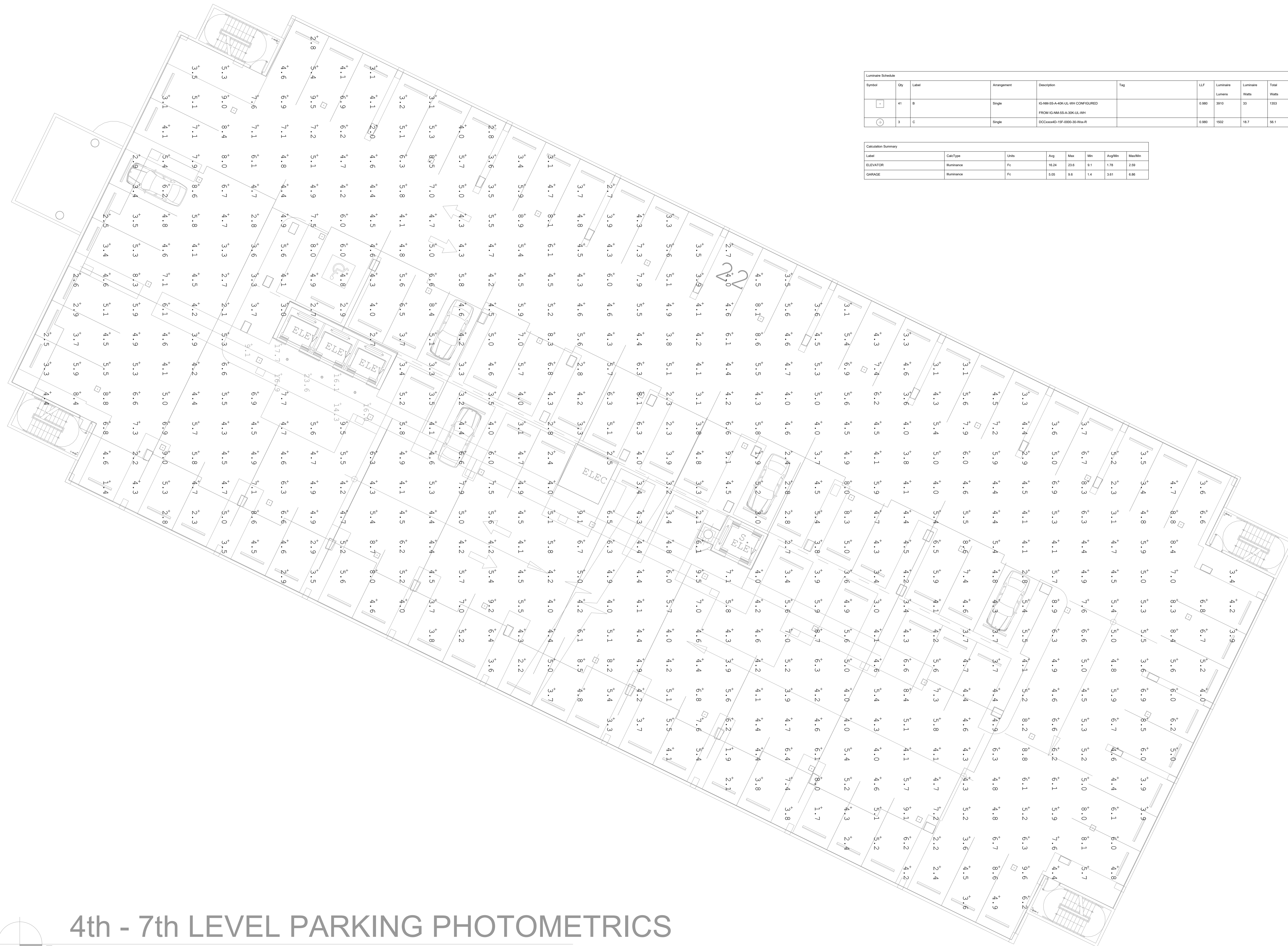
COHEN • FREEDMAN • ENCINOSA & ASSOC.
Architects, PA

8085 N.W. 155th Street Miami Lakes, Florida 33016 305-826-3999



4th - 7th LEVEL PARKING PHOTOMETRICS

3/32" = 1'-0"



Symbol	Qty	Label	Arrangement	Description	Tag	LF	Luminaire Lumens	Luminaire Watt	Total Watts
⊖	41	B	Single	IG-HM-SS-A-40K-UL-WH CONFIGURED FROM IG-HM-SS-A-30K-UL-WH		0.980	3910	33	1353
⊕	3	C	Single	DCCxxxxID-15F-0000-30-Ww-R		0.980	1902	18.7	56.1

Label	CalcType	Units	Avg	Max	Min	AvgMin	MaxMin
ELEVATOR	Illuminance	Fc	16.24	23.6	9.1	1.78	2.59
GARAGE	Illuminance	Fc	5.05	9.8	1.4	3.61	6.86

PLANNING AND ZONING BOARD REVIEW

BH 164

2261 NE 164TH STREET, NORTH MIAMI BEACH, FL
4TH - 7TH LEVEL PARKING PHOTOMETRICS

revisions:
1-06/28/2022
1-07/25/2022
3-09/19/2022

drawn by: JF/SP/JG/KM/AB

date: 7/28/2022

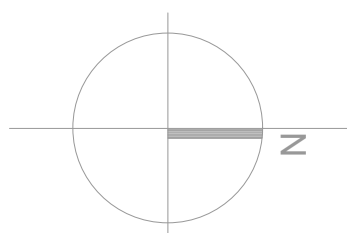
sheet no:

LD-204

project: 3903

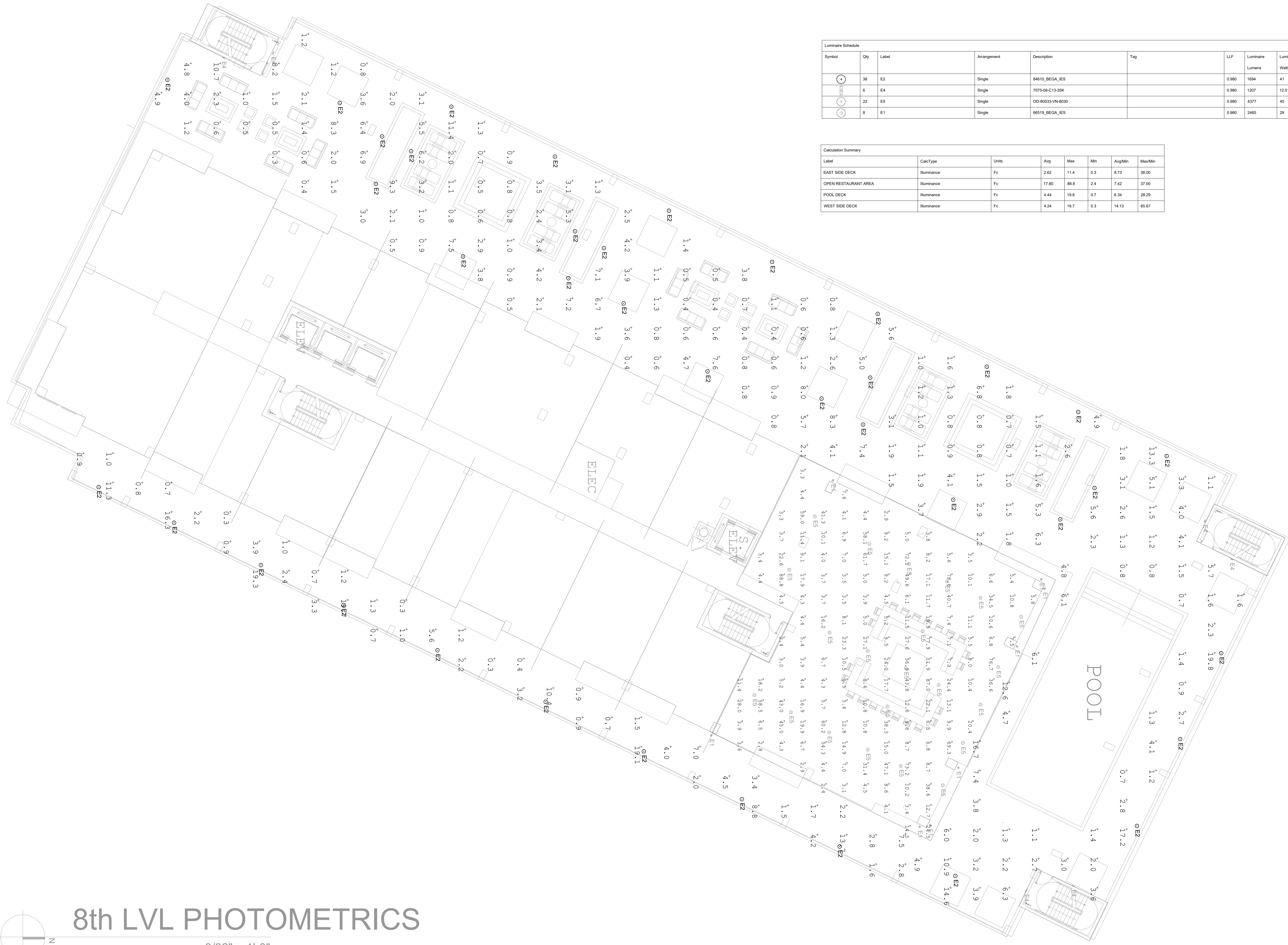
COHEN • FREEDMAN • ENCINOSA & ASSOC.
Architects, PA

8085 N.W. 155th Street Miami Lakes, Florida 33016 305-826-3999



8th LVL PHOTOMETRICS

3/32" = 1'-0"



Symbol	Qty	Label	Arrangement	Description	Tag	LF	Luminaire Lumens	Luminaire Watts	Total Watts
⊙	38	E2	Single	84610_BEGA_ES		0.980	1694	41	1558
⊙	6	E4	Single	7075-08-C13-35K		0.980	1207	12.0199	72.119
⊙	22	E5	Single	OD-80033-VN-8000		0.980	4377	45	990
⊙	8	E1	Single	66519_BEGA_ES		0.980	2465	29	232

Label	CalcType	Units	Avg	Max	Min	AvgMin	MaxMin
EAST SIDE DECK	Illuminance	Fc	2.62	11.4	0.3	8.73	38.00
OPEN RESTAURANT AREA	Illuminance	Fc	17.80	88.8	2.4	7.42	37.00
POOL DECK	Illuminance	Fc	4.44	19.6	0.7	6.34	28.20
WEST SIDE DECK	Illuminance	Fc	4.24	19.7	0.3	14.13	65.67

PLANNING AND ZONING BOARD REVIEW

BH 164

2261 NE 164TH STREET, NORTH MIAMI BEACH, FL

8TH LEVEL PHOTOMETRICS

revisions:
1-06/28/2022
1-07/25/2022
3-09/19/2022

drawn by: LT/SP/JG/KM/AB

date: 7/28/2022

sheet no:

LD-205

project: 3903

COHEN • FREEDMAN • ENCINOSA & ASSOC.
Architects, PA

8085 N.W. 155th Street Miami Lakes, Florida 33016 305-826-3999