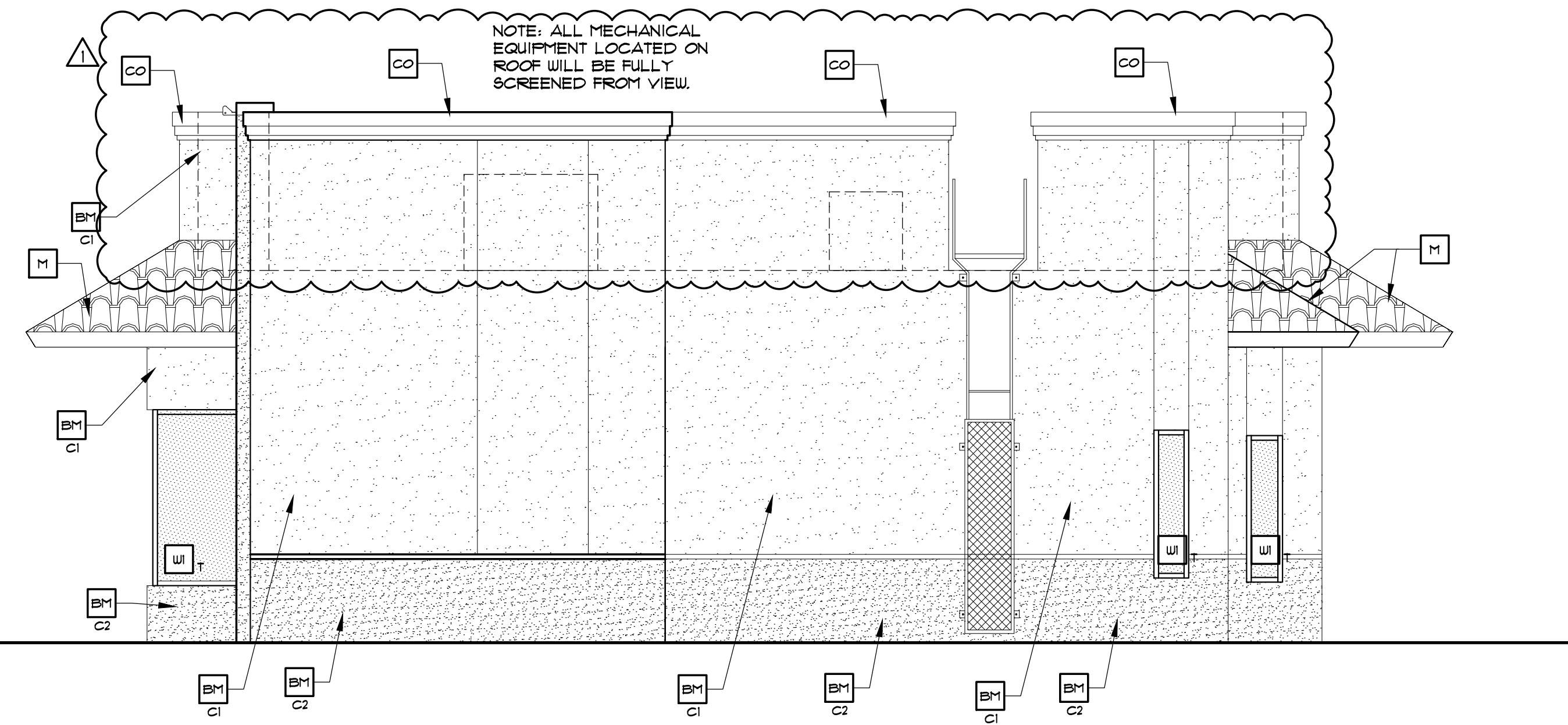
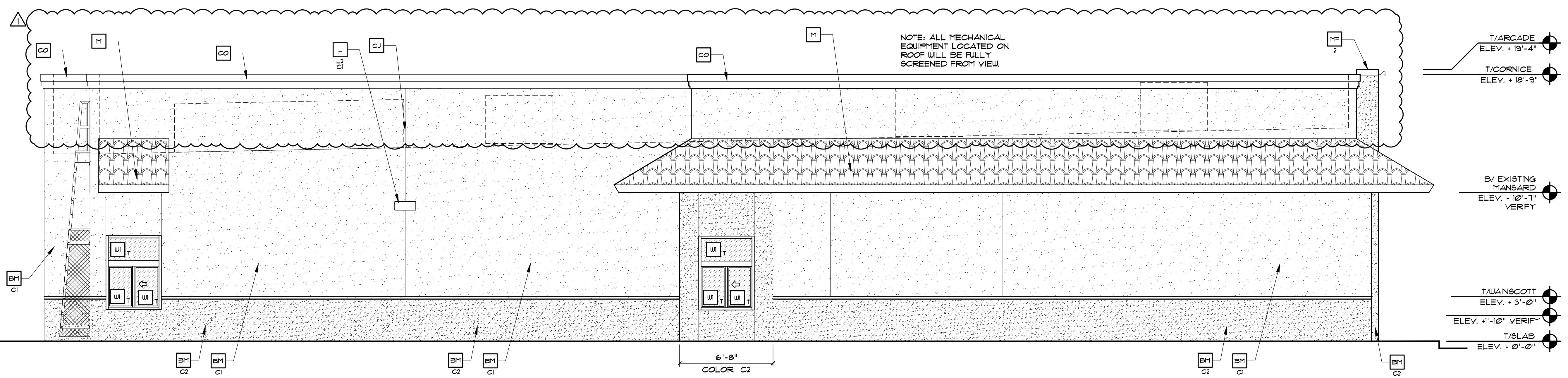


- T/ARCADE  
ELEV. +10'-4"
- T/CORNICE  
ELEV. +10'-9"
- B/ EXISTING  
MANSARD  
ELEV. +10'-1"  
VERIFY
- T/EXIST SILL  
ELEV. +3'-4 1/2"  
FIELD VERIFY
- T/WAINSCOTT  
ELEV. +3'-0"
- T/SLAB  
ELEV. +0'-0"



1 REAR ELEVATION  
1/4" = 1'-0"



2 DRIVE-THRU ELEVATION  
1/4" = 1'-0"

**KEY NOTES:**

- BM1  
CI NEW CEMENTITIOUS FINISH  
COLOR: BENJAMIN MOORE  
C1 = WINTERWOOD BM-145486 + LRV 50/39  
C2 = ROCK MOUNTAIN 204-20
- C ALUMINUM CANOPY FASCIA SYSTEM  
COLOR: WHITE

- CJ CEMENTITIOUS CONTROL JOINT - 0"SPACE PER MANUFACTURER'S RECOMMENDATIONS
- CO CORNICE PARAFET CAP  
COLOR = MATONAISE, 2152-10
- D HOLLOW METAL DOOR - PAINT TO MATCH SURROUNDING COLOR

- L LIGHT FIXTURE - SEE ELECTRICAL  
XX-TYPE:  
L1 = UP AND DOWN SCNCE  
L2 = DOWN ONLY SCNCE  
L3 = RECESSED DOWN FIXTURE  
COLOR:  
C1 = SILVER  
C2 = WHITE

- M NEW SPANISH TILE ROOF, WITH WHITE TRIM AND SOFFIT, COLOR: EXISTING GAS STATION ROOF
- LE ACCENT LIGHTING - SEE ELECTRICAL  
XX- LED LIGHT,  
L4 = DOWN ONLY FIXTURE
- MF METAL FASCIA PRE-FAB ANCHOR-TITE FASCIA  
X-TYPE:  
2 = COLOR: MATCH BM1  
C2

- S McDONALD'S SIGNAGE BY OTHERS - UNDER A SEPARATE PERMIT. SIGNAGE IS SHOWN FOR REFERENCE ONLY BUT NOT INCLUDED IN THIS SUPPLEMENTAL AND IS SUBJECT TO SEPARATE REVIEW THROUGH A BUILDING PERMIT APPLICATION.
- SF STOREFRONT AND GLAZING - CLEAR ANODIZED ALUMINUM FRAME + CLEAR GLASS
- TI ALUMINUM TRELLIS SYSTEM  
XX-COLOR:  
C2 = WHITE  
C4 = GOLD

- W NEW STOREFRONT AND GLAZING CLEAR ANODIZED ALUMINUM FRAME  
T = TEMPERED

DRAWN BY MW		STD ISSUE DATE		REVIEWED BY SJP		DATE ISSUED 01.28.22		NAT # 18490		SITE ADDRESS 2201 NE 163RD ST NORTH MIAMI FL 33160	
PREPARED FOR: McDonald's USA, LLC		PREPARED BY: SCOTT J. PURDY		DATE 03.31.22		REV 1		DESCRIPTION		MW BY	
MAJOR REMODEL PROGRAM		2102.141		A2.1		AA-0003276					

© 2022 McDonald's USA, LLC  
**McDonald's USA, LLC**  
 Architecture, Inc.  
 1711 North Himes Avenue, Tampa, Florida 33607  
 PH 813.583.4035 Fax 813.583.4350 Web Site: www.purdy.com

These drawings and specifications are the confidential and proprietary property of McDonald's USA, LLC and shall not be copied or reproduced without written authorization. The contract documents were prepared not suitable for use on a different site or at a later time. Use of these drawings for reference or example on another project requires the contract documents for reuse on another project. It is not authorized.