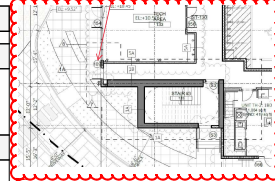


1 WEST ELEVATION
SCALE: 3/32" = 1'-0"

GLAZING BREAKDOWN		
GROUND FLOOR-REAR/BACK SPACE WEST FACADE	REQUIRED	PROVIDED
GROUND FLOOR-GLAZING WEST FACADE	20% (1,599 sf)	20% (1,599 sf)

MATERIAL LEGEND		
* NOT ALL NOTES APPLICABLE TO THIS SHEET		
DIVISION 03 CONCRETE	DIVISION 08 DOORS & WINDOWS	DIVISION 09 FINISHES
03-201 CONCRETE SLAB- SEE STRUCT. DWGS. 03-202 CONCRETE COLUMN- SEE STRUCT. DWGS. 03-203 CONCRETE BEAM/HEADER- SEE STRUCT. DWGS. 03-204 CONCRETE EYEBROW/CANOPY- SEE STRUCT. DWGS.	08-201 SCHEDULED DOOR. 08-202 FINED WINDOW AS SCHEDULED. 08-203 STOREFRONT DOOR AS SCHEDULED. 08-204 STOREFRONT AS SCHEDULED. 08-205 METAL GRILLES AS SCHEDULED.	09-201 SMOOTH STUCCO FINISH (PAINTED). 09-202 2" DIA. WEEP HOLE WALL DRAIN W/ 2% SLOPE. 09-203 1/8" SLICED REVEAL PATTERNS SEE DETAIL 1/8-600. 09-211 THICKENED STUCCO PANELS.
DIVISION 05 METALS	DIVISION 10 SPECIALTIES	
05-201 METAL RAILING- 42" MIN. HEIGHT. 05-202 METAL/GLASS RAILING- 42" MIN. HEIGHT. 05-203 METAL TRILLES FRAMING- SEE STRUCT. DWGS.	10-201 METAL LOUNGER BY SPECIALTY ENG. 10-202 PUBLIC ART PRICED BY OTHER.	



soleste
NoMBeach

Estate Companies

PROPERTY ADDRESS:
8031 S.W. 70TH STREET, SUITE A200
NORTH MIAMI, FL 33143

PH: (305) 665-9002
EMAIL: ROY.FRIS@KPLC.COM

ARCHITECT:
VIN ENGINEERING, INC.
2000 WEST FLAGLER STREET, SUITE 113
MIAMI, FL 33141

PH: (305) 561-4267
EMAIL: BOB@VINENG.COM

LANDSCAPE ARCHITECT:
MURPHY MACY, AIA

PH: (304) 492-9839
EMAIL: LAMON@MURPHYMACY.COM

STRUCTURAL ENGINEER:
PARSONS CONSULTING ENGINEERS
6135 N.W. 10TH STREET, SUITE C1
MIAMI, FL 33155

PH: (786) 877-0599
EMAIL: CONNOR@PARSONSCE.COM

MECHANICAL ENGINEER:
HMS ENGINEERING
2000 N.W. 89TH PLACE, SUITE 111
MIAMI, FL 33152

PH: (305) 471-0377
EMAIL: HEDD@HMSPE.COM

ELECTRICAL ENGINEER:
Cypress Electric
5025 S.W. 74 CT, SUITE 100
MIAMI, FL 33155

PH: (305) 669-0040
EMAIL: JOHN@CYPRESSMIA.COM

MULTIFAMILY DEVELOPMENT FOR:
THE RIVERWALK AT NORTH MIAMI BEACH

16395 BISCAYNE BOULEVARD
NORTH MIAMI BEACH, FL 33160

- CONSTR. SET UPDATE - 02-12-21
- OWNER REVISION - 04-30-21
- OWNER REVISION - 10-15-21

FORM GROUP
architecture . planning

FORM GROUP, INC.
200 N.W. 10TH STREET, SUITE 100
MIAMI BEACH, FL 33139
PH: (305) 666-1111
WWW.FORMGROUP.COM

PROJECT NO.: 2019-001
DATE: 10/1/2021
DRAWING NO.: A-603

CONSTRUCTION SET UPDATE: 02-12-21