

OVERALL GLAZING BREAKDOWN		
	AS APPROVED UNDER MODIFICATION R2020-89	PROPOSED
NORTH FACADE	22,548.7 sf.	19,786.2 sf. (-12.3%)
EAST FACADE	9,430.6 sf.	6,678.7 sf. (-29.2%)
SOUTH FACADE	13,541.2 sf.	12,178.4 sf. (-10%)
WEST FACADE	10,436.2 sf.	10,315.8 sf. (-1%)
TOTAL	55,956.7 sf.	48,959.1 sf. (-12.5%)

soleste
NoMIBeach

DEVELOPER:
The Estate Companies
ROBERT SURIS
6201 S.W. 70th STREET, SUITE #200
SOUTH MIAMI, FL 33143
PH: (305) 663-1002
EMAIL: RSURIS@EIGFL.COM

CIVIL ENGINEER:
VSN ENGINEERING, INC.
8550 WEST FLAGLER STREET, SUITE 113
MIAMI, FL 33144
PH: (305) 551-6267
EMAIL: kev@vseng.com

LANDSCAPE ARCHITECT:
KIMBERLY MOYER, RLA

PH: (954) 492-9609
EMAIL: k.moyers1@gmail.com

STRUCTURAL ENGINEER:
PARAMOUNT CONSULTING ENGINEERS
6135 N.W. 167th STREET, SUITE E1
MIAMI, FL 33015
PH: (786) 877-2699
EMAIL: cesar.soto@paramountco.com

MECHANICAL, PLUMBING & FIRE PROTECTION ENGINEER:
RMG Engineering
2000 N.W. 55th PLACE, SUITE 111
DORAL, FL 33172
PH: (305) 471-3777
EMAIL: rotando@rmgeng.com

ELECTRICAL ENGINEER:
Caymanes Martin
5001 SW 74 CT, SUITE 100
MIAMI, FL 33155
PH: (305) 669-5040
EMAIL: josealuis@caymanesmartin.com

MULTI-FAMILY DEVELOPMENT FOR:
THE RIVERWALK
AT NORTH MIAMI BEACH

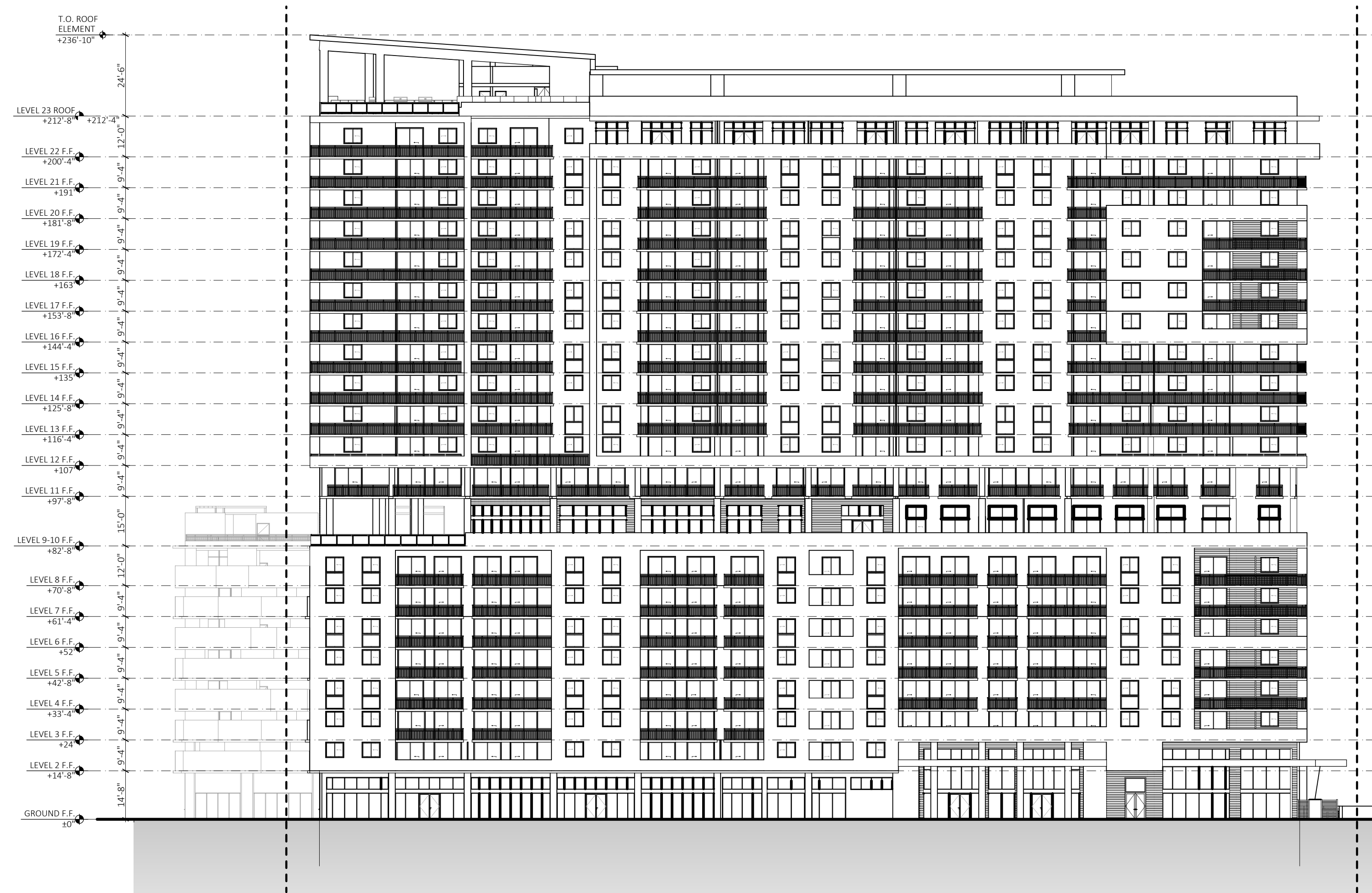
16395 BISCAYNE BOULEVARD
NORTH MIAMI BEACH, FL 33160

REVISIONS:

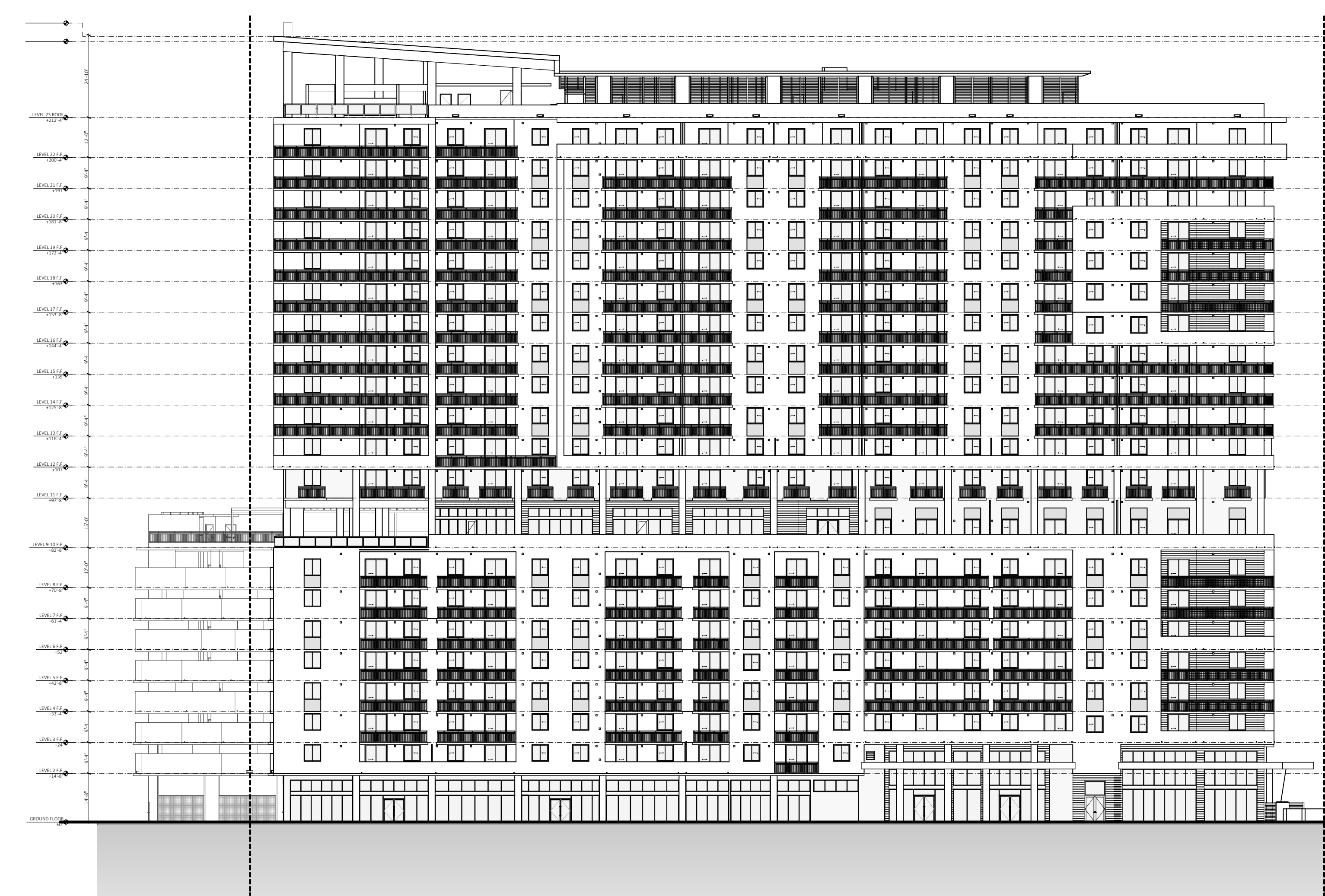
FORMGROUP
architecture .planning

FORM GROUP, INC.
4300 SW 73 AVE, SUITE 106, MIAMI, FL 33155
TEL: 305 443 4244 FAX: 305 443 3338
ARCHITECT OF RECORD: DAVID MORRIS, AIA
AIA0215851

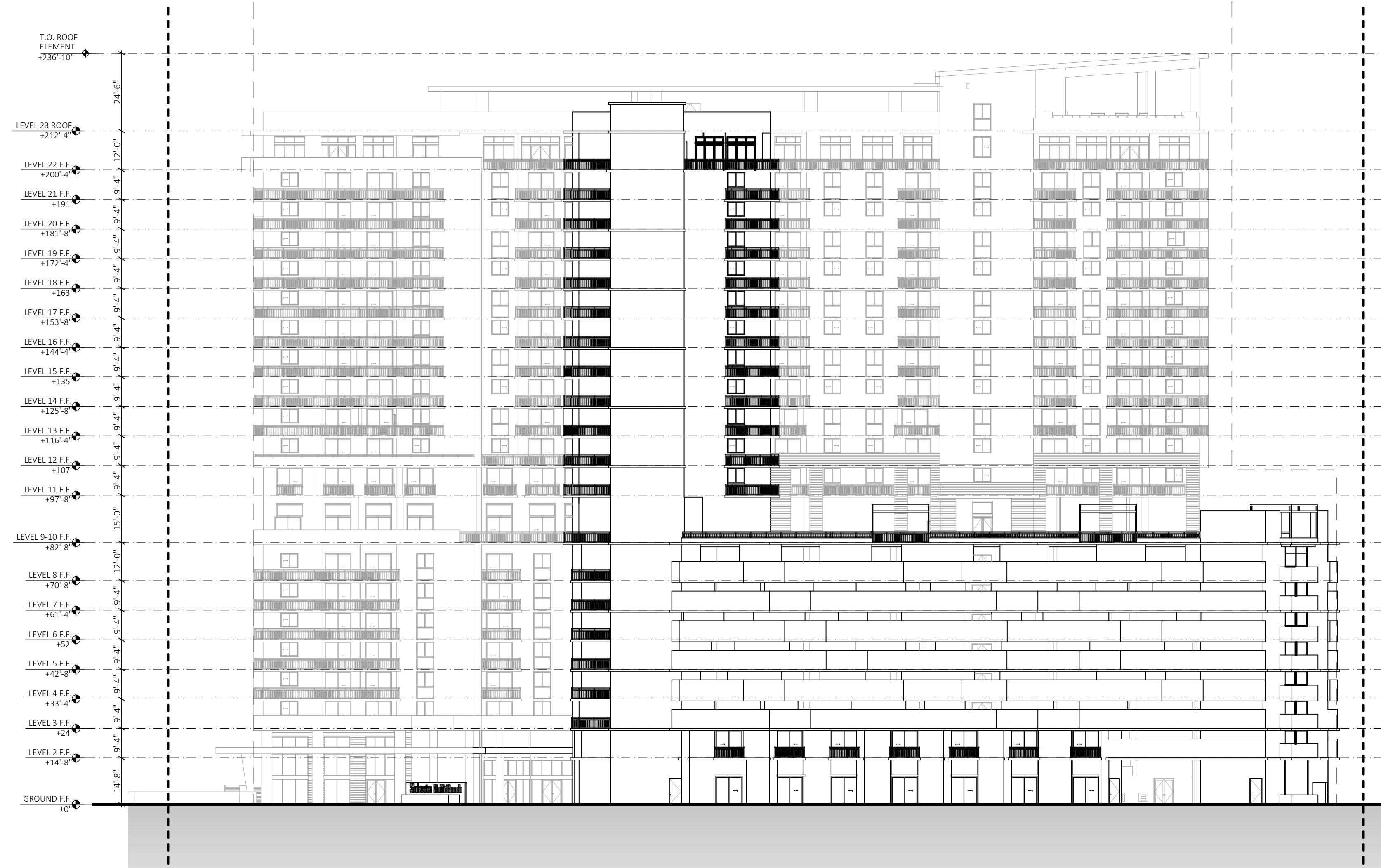
PROJECT NO: 20-0123 TITLE: ELEVATION COMPARISON
DATE: 12/15/2021
SCALE: AS SHOWN DRAWING NO.: A-600x



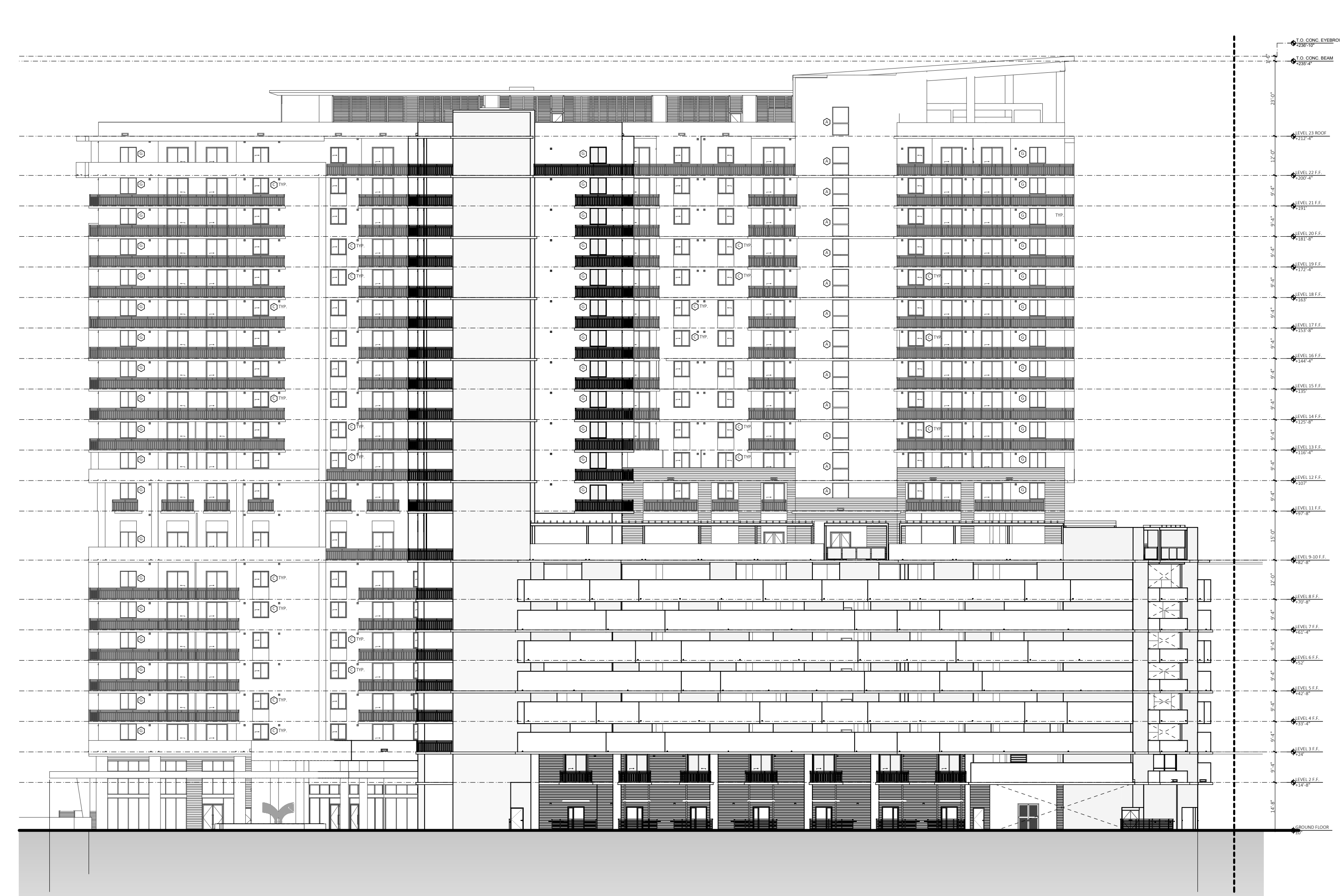
A1 NORTH ELEVATION (R2020-89)



A NORTH ELEVATION (BM-21-259)



B1 SOUTH ELEVATION (R2020-89)



B SOUTH ELEVATION (BM-21-259)
SCALE: 1:200.98